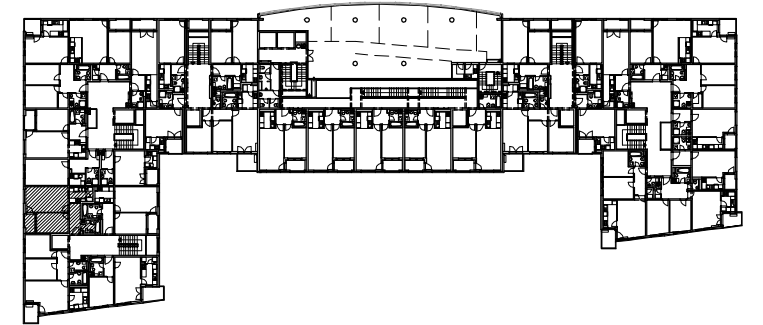
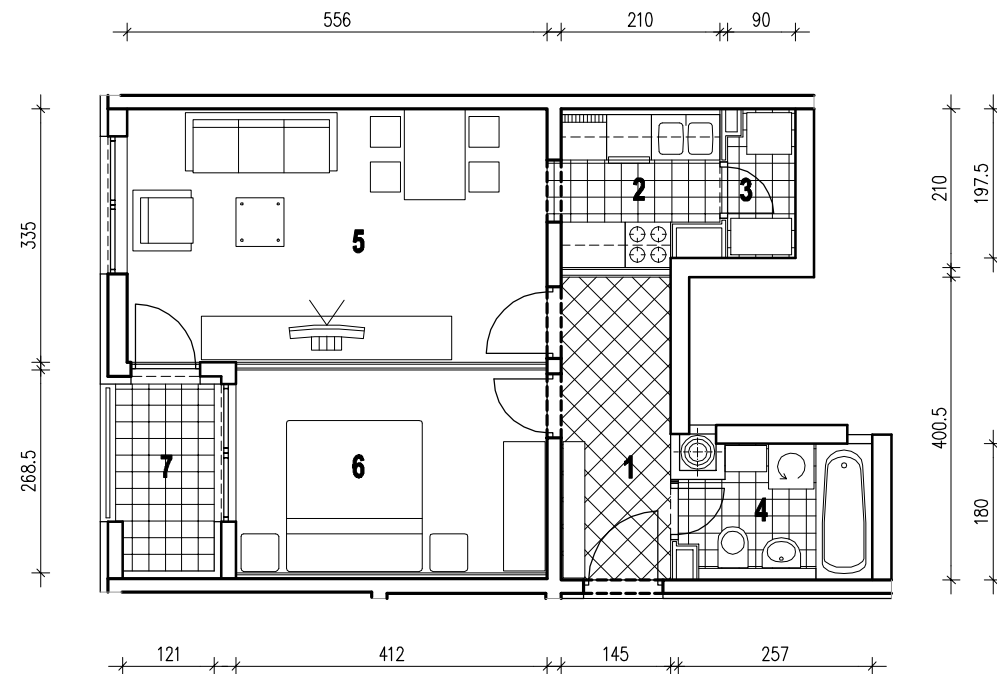
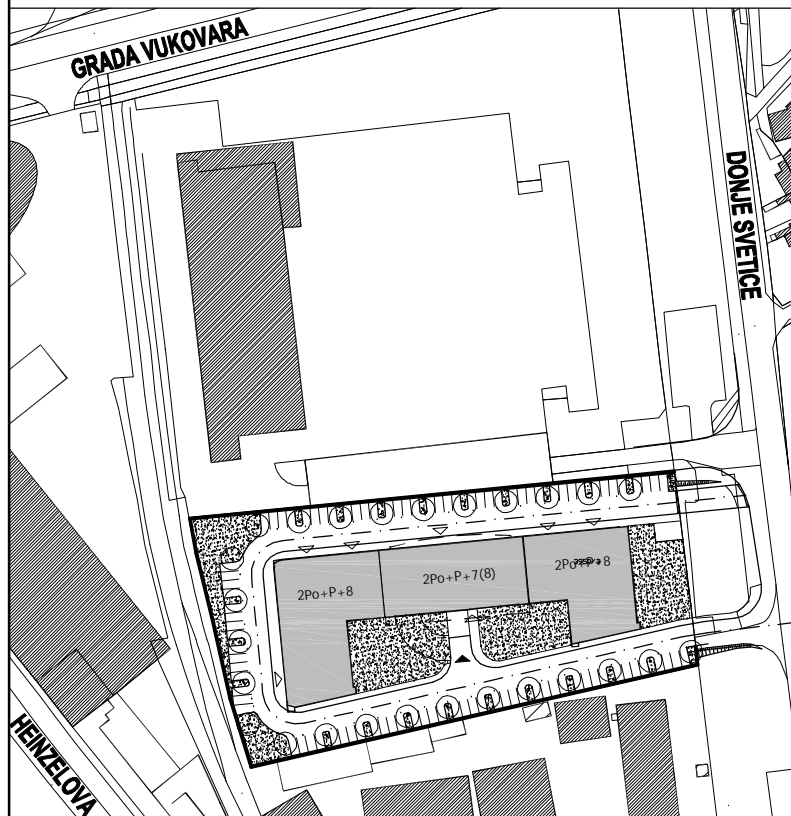


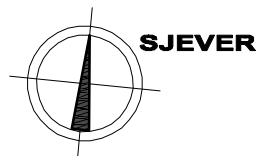
POLOŽAJ U GRADU



POLOŽAJ U ZGRADI



SITUACIJA



MJ 1:100

STAN A12 - DVOSOBNI - 3. KAT

1. ULAZ	5.81 m2
2. KUHINJA	4.01 m2
3. IZBA	1.70 m2
4. KUPAONICA	3.97 m2
5. DNEVNI BORAVAK	18.63 m2
6. SOBA	11.06 m2
7. LOGIA	3.15x0.75=2.36 m2
UKUPNO	47.54 m2



P = 47.54 m2

PROČELJE ZAPAD - ULICA