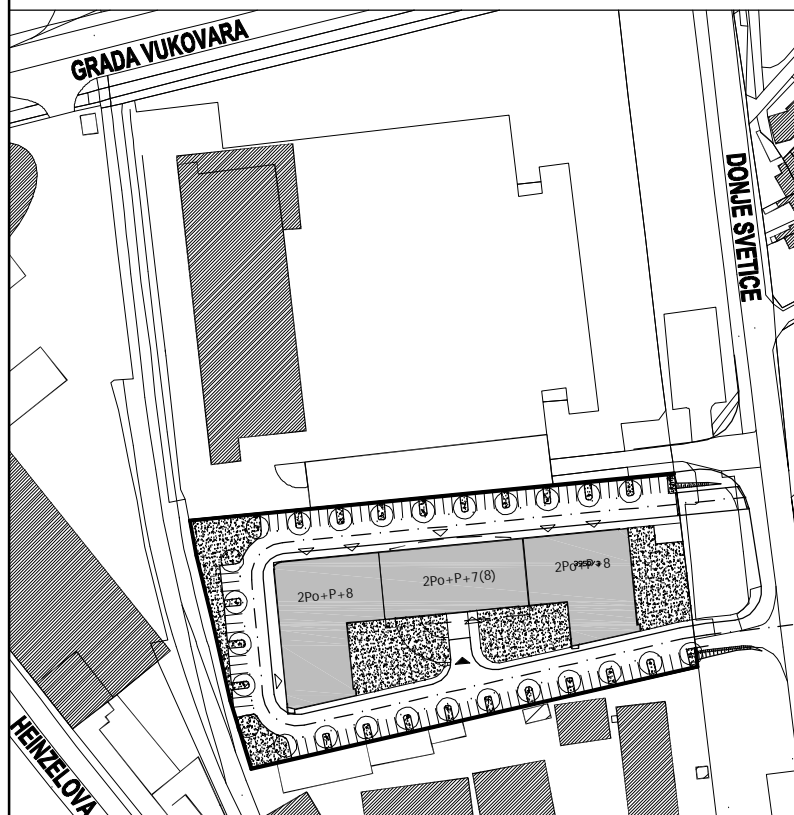
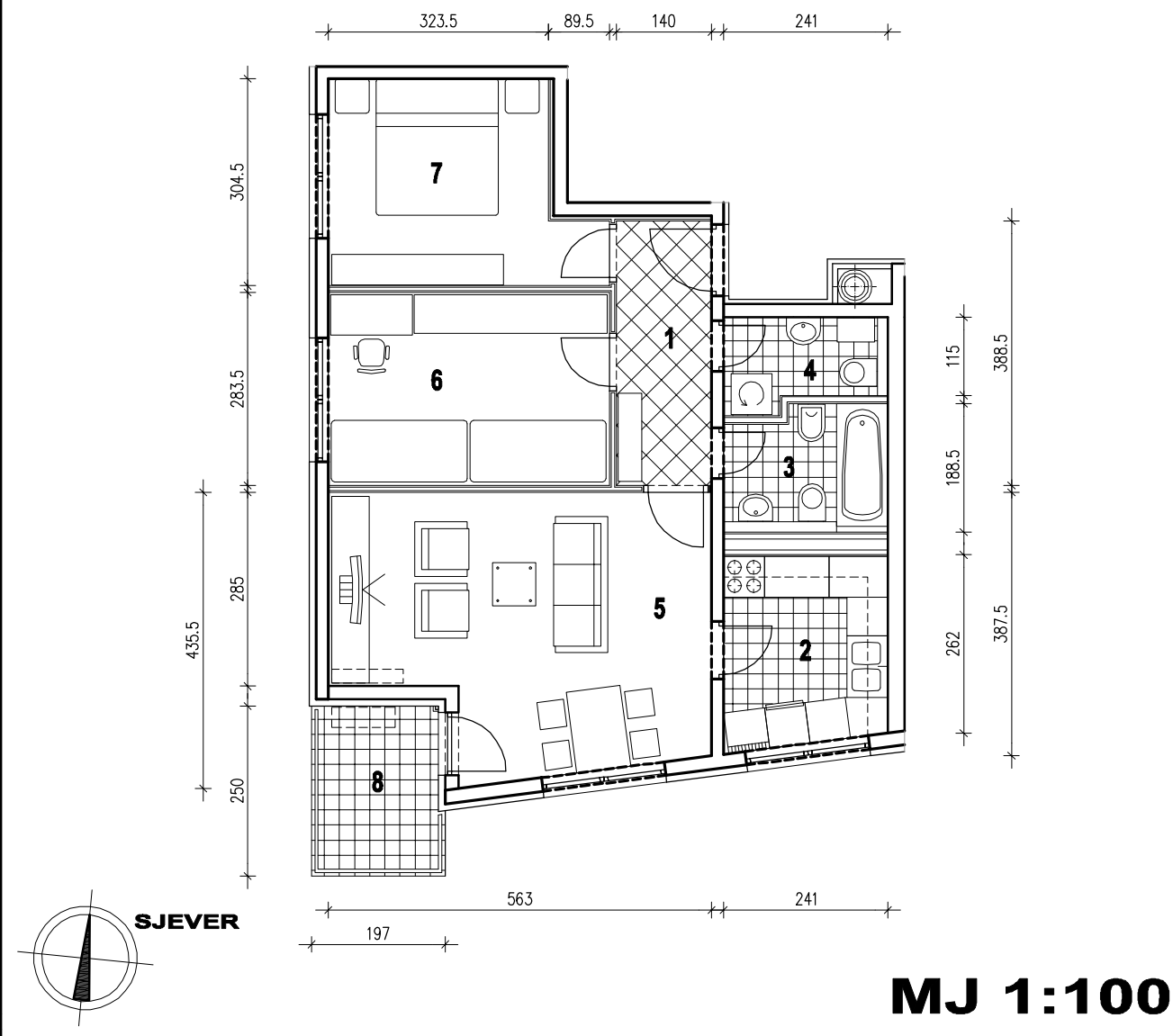


**POLOŽAJ U GRADU**



**SITUACIJA**

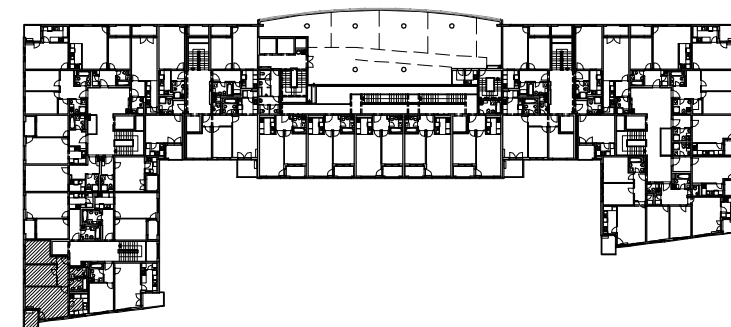


**MJ 1:100**

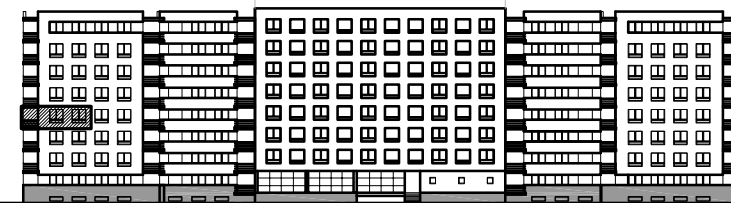
**STAN A13 - TROSOBNI - 4. KAT**

1. ULAZ	5.44 m <sup>2</sup>
2. KUHINJA	6.69 m <sup>2</sup>
3. KUPAONICA	4.01 m <sup>2</sup>
4. WC	2.85 m <sup>2</sup>
5. DNEVNI BORAVAK	20.74 m <sup>2</sup>
6. SOBA	11.71 m <sup>2</sup>
7. SOBA	10.70 m <sup>2</sup>
8. LOGIA	4.77x0.75=3.57 m <sup>2</sup>
<b>UKUPNO</b>	<b>65.71 m<sup>2</sup></b>

**P = 65.71 m<sup>2</sup>**



**POLOŽAJ U ZGRADI**



**JUŽNO PROČELJE**