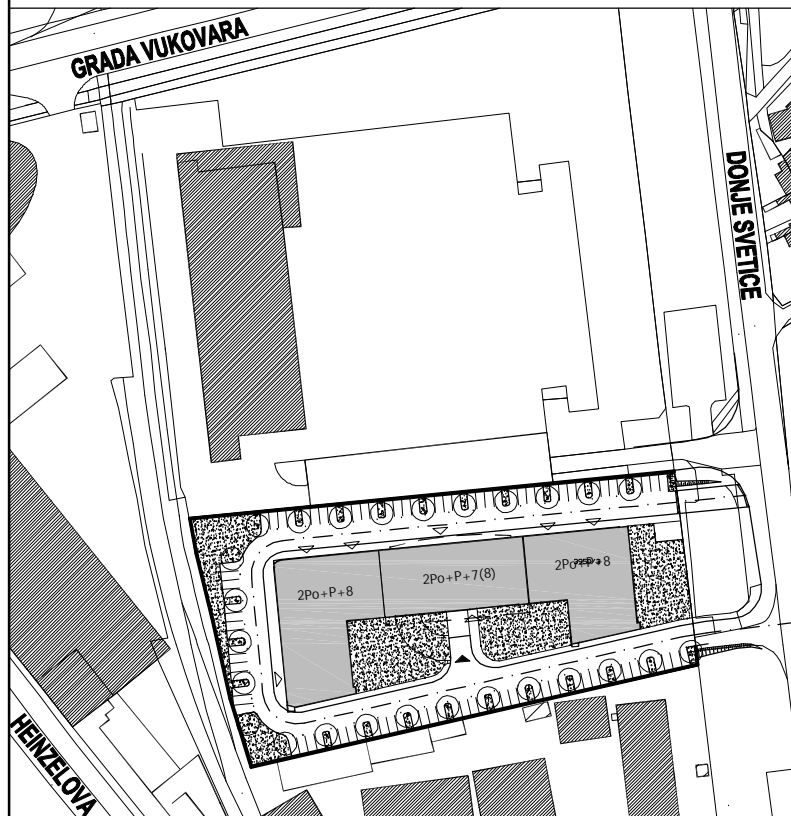
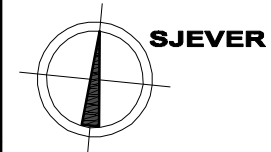
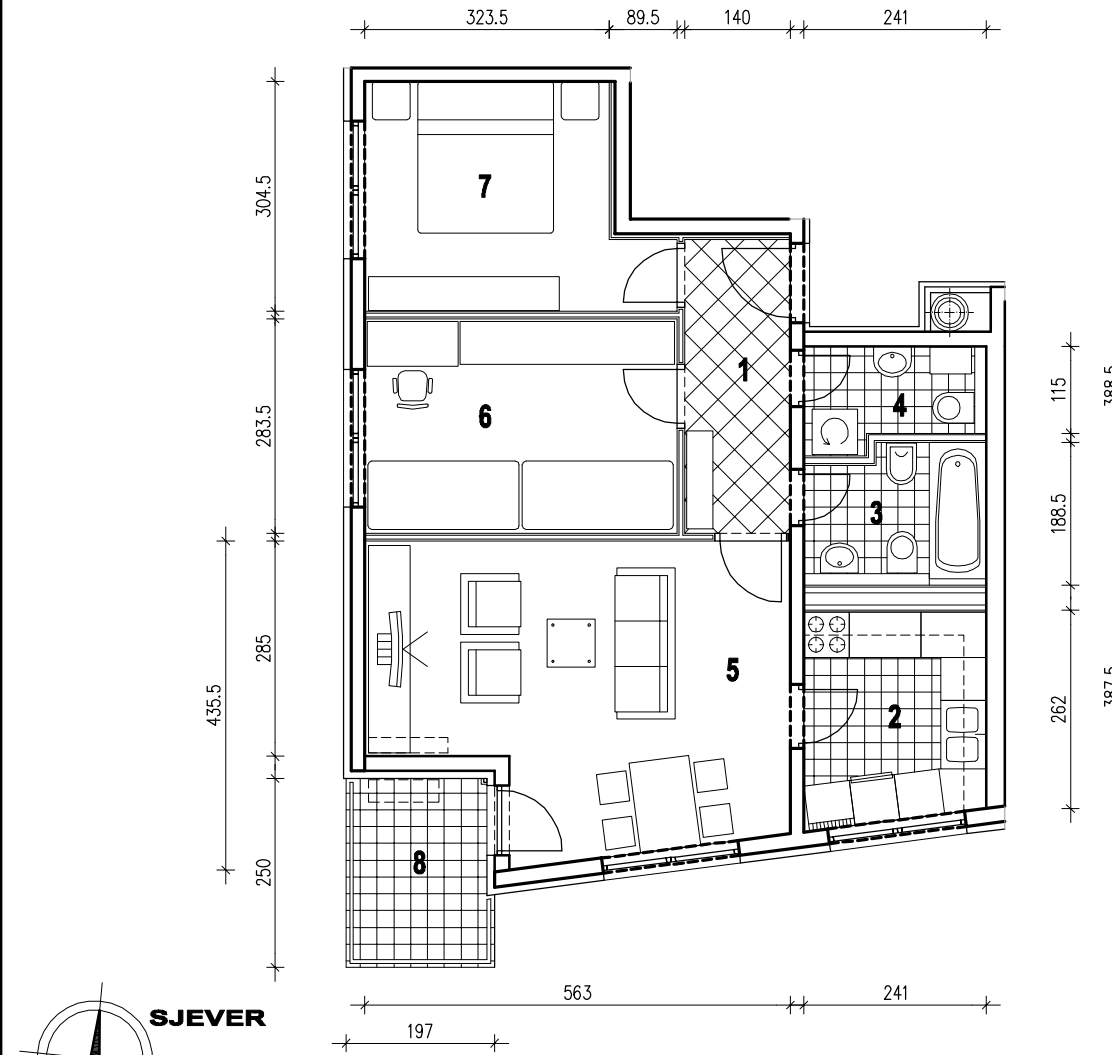


POLOŽAJ U GRADU



SITUACIJA

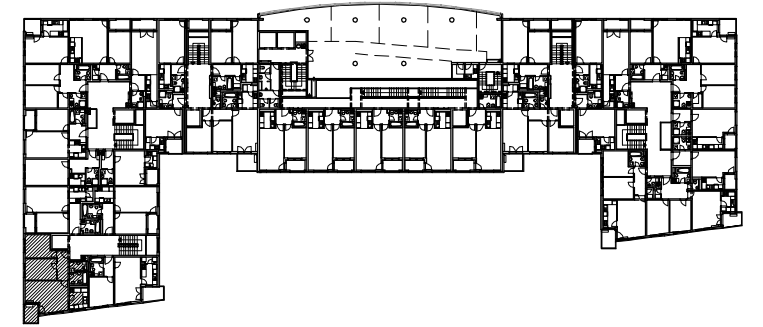


MJ 1:100

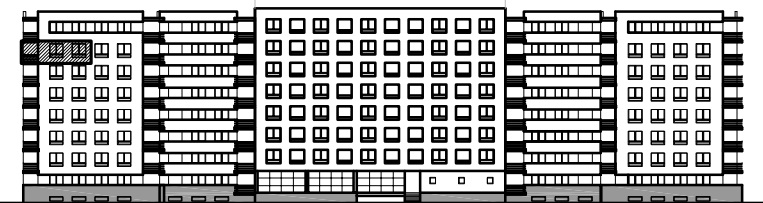
STAN A25 - TROSOBNI - 7. KAT

| | |
|-------------------|-------------------------------|
| 1. ULAZ | 5.44 m ² |
| 2. KUHINJA | 6.69 m ² |
| 3. KUPAONICA | 4.01 m ² |
| 4. WC | 2.85 m ² |
| 5. DNEVNI BORAVAK | 20.74 m ² |
| 6. SOBA | 11.71 m ² |
| 7. SOBA | 10.70 m ² |
| 8. LOGIA | 4.77x0.75=3.57 m ² |
| UKUPNO | 65.71 m² |

P = 65.71 m²



POLOŽAJ U ZGRADI



JUŽNO PROČELJE