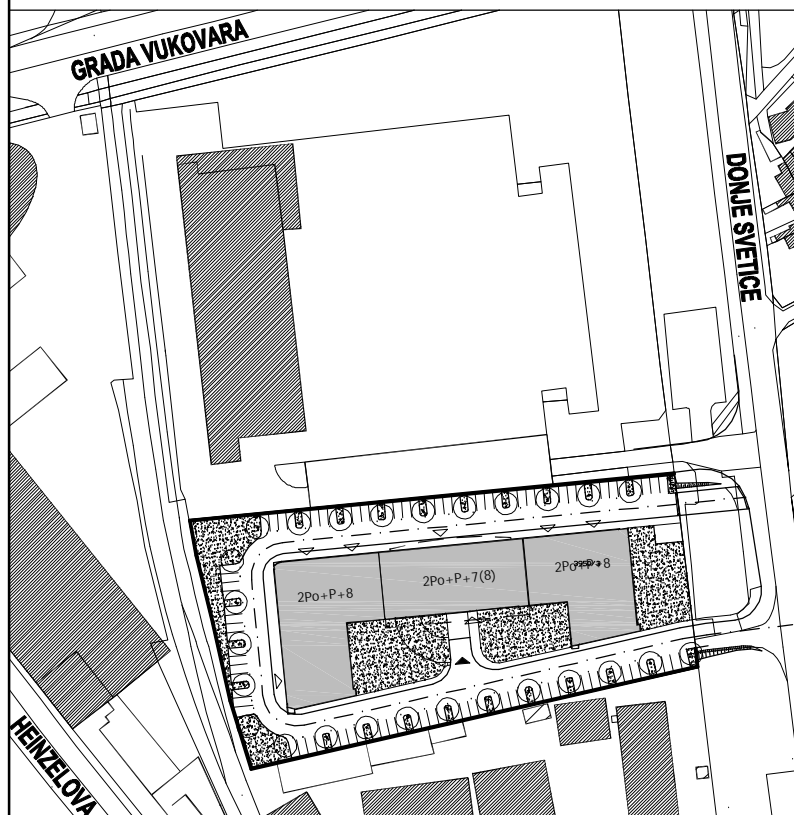
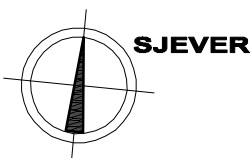
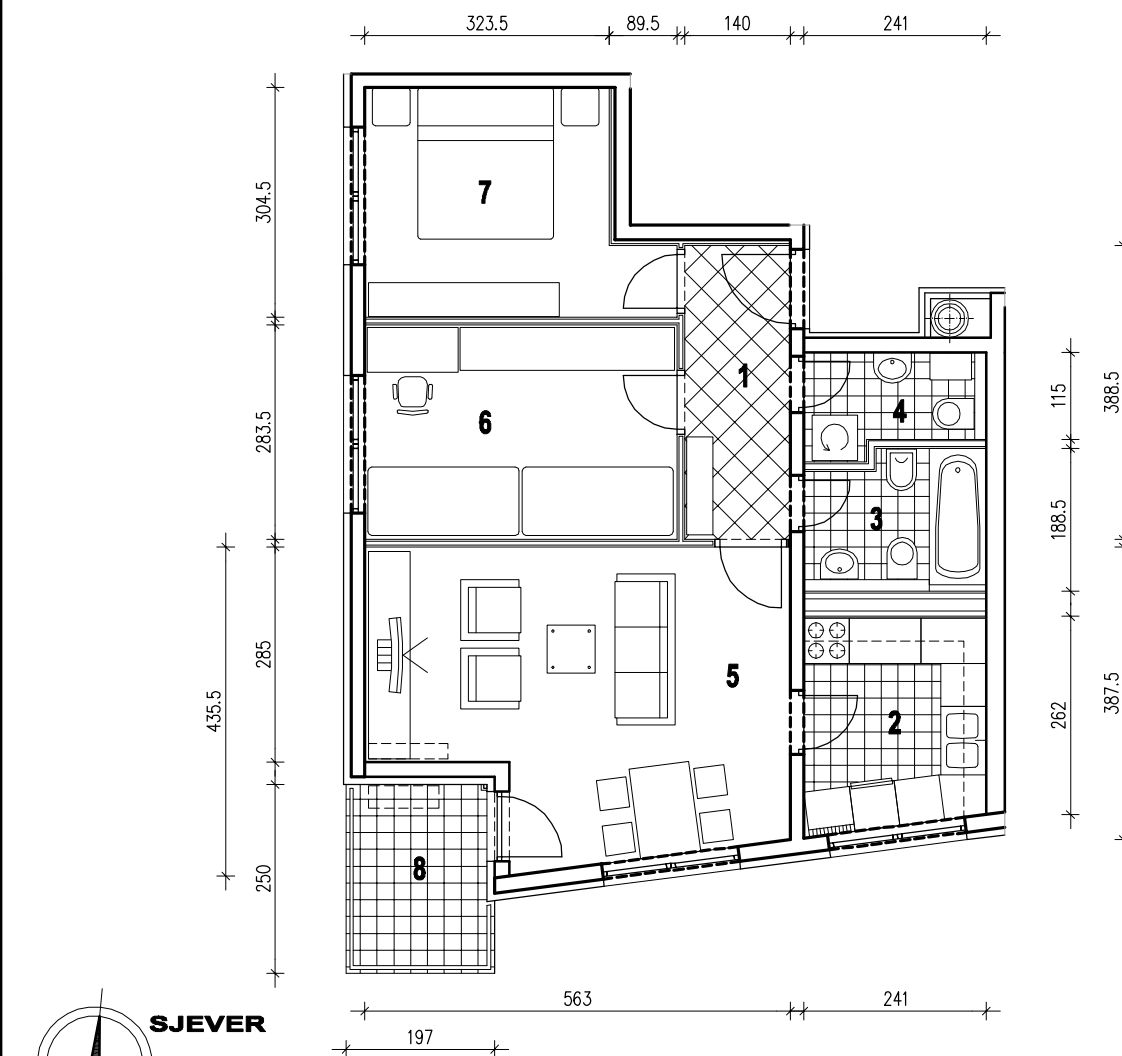


POLOŽAJ U GRADU



SITUACIJA

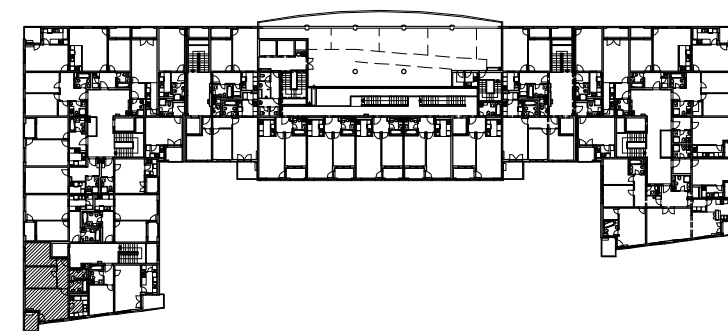


MJ 1:100

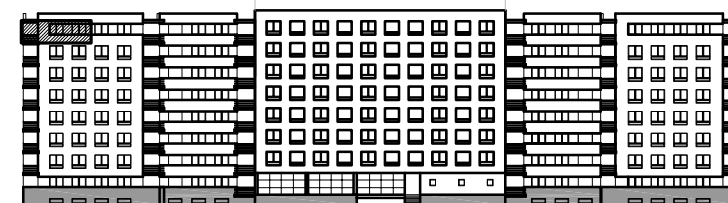
STAN A29 - TROSOBNI - 8. KAT

1. ULAZ	5.44 m ²
2. KUHINJA	6.69 m ²
3. KUPAONICA	4.01 m ²
4. WC	2.85 m ²
5. DNEVNI BORAVAK	20.74 m ²
6. SOBA	11.71 m ²
7. SOBA	10.70 m ²
8. LOGIA	4.77x0.75=3.57 m ²
UKUPNO	65.71 m²

P = 65.71 m²



POLOŽAJ U ZGRADI



JUŽNO PROČELJE