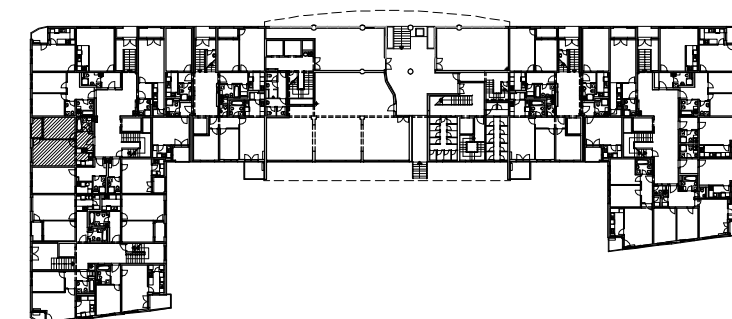
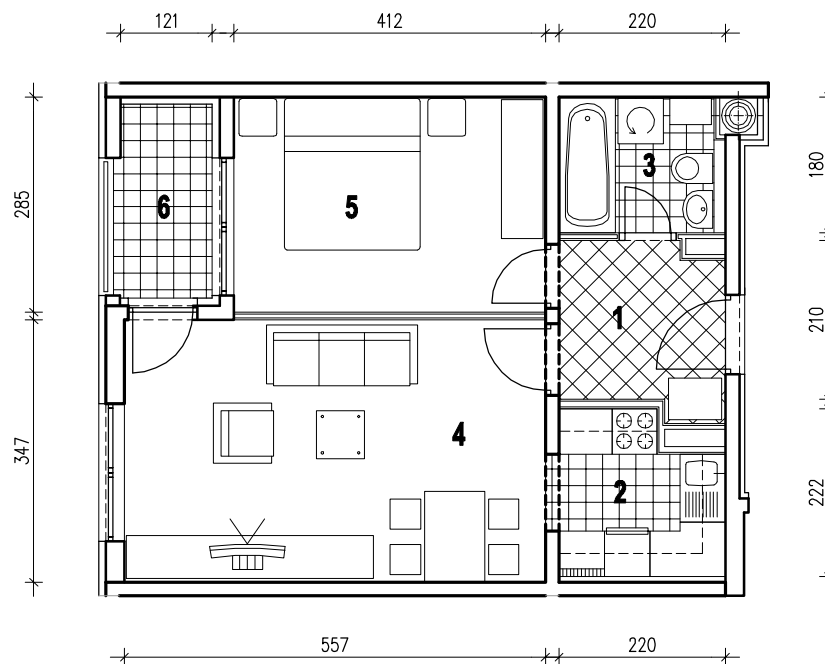
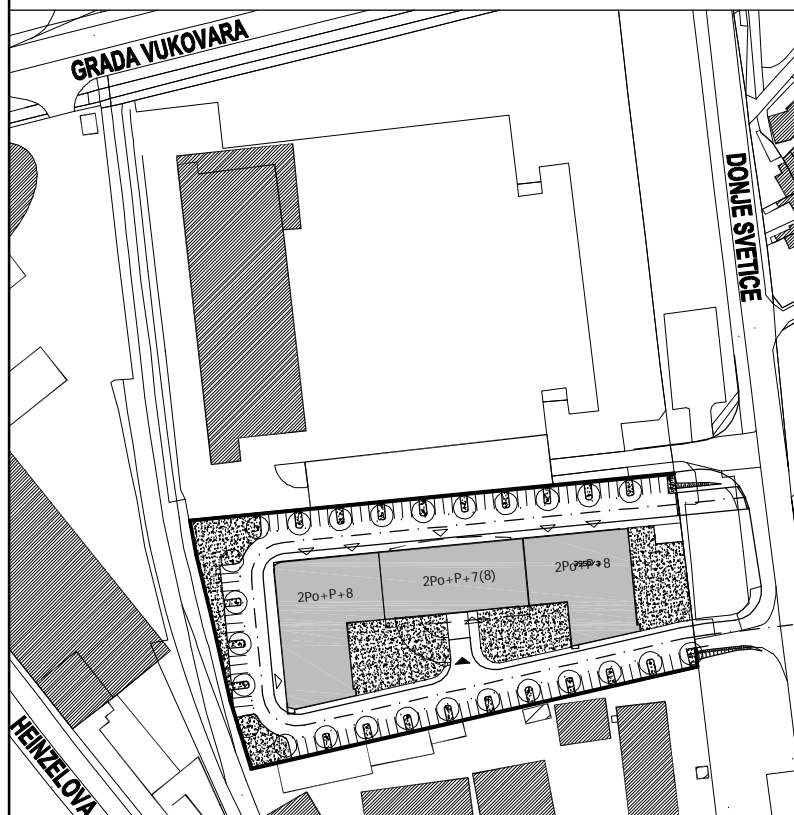


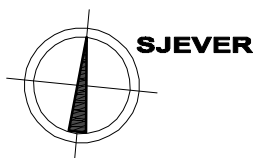
POLOŽAJ U GRADU



POLOŽAJ U ZGRADI



SITUACIJA



MJ 1:100

STAN B3 - DVOSOBNI - 1. KAT

1. ULAZ	4.72 m ²
2. KUHINJA	4.53 m ²
3. KUPAONICA	3.69 m ²
4. DNEVNI BORAVAK	19.54 m ²
5. SOBA	11.74 m ²
6. LOGIA	3.26x0.75=2.44 m ²
UKUPNO	46.66 m²



PROČELJE ZAPAD - ULICA

P = 46.66 m²