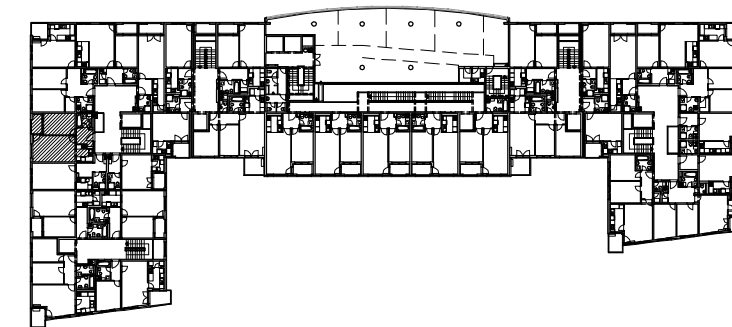
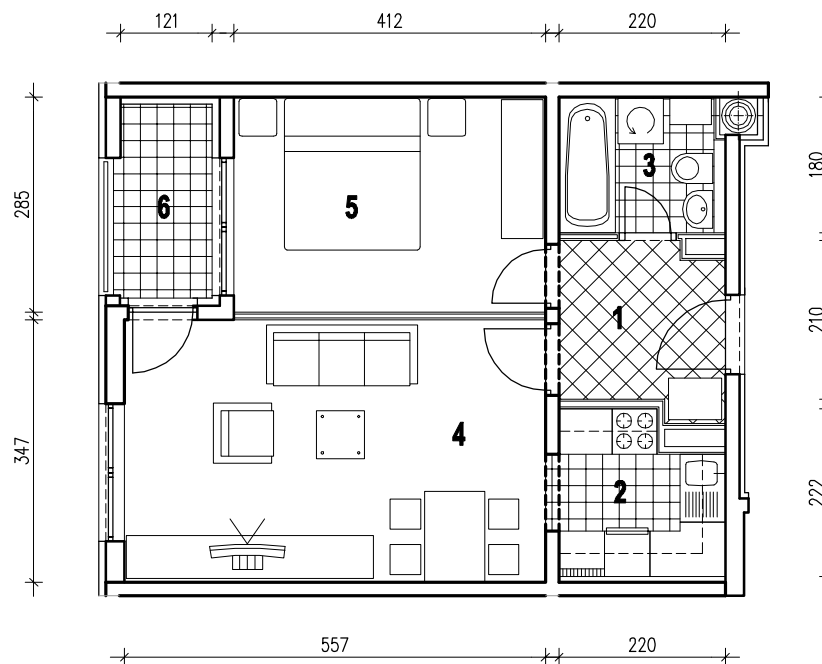
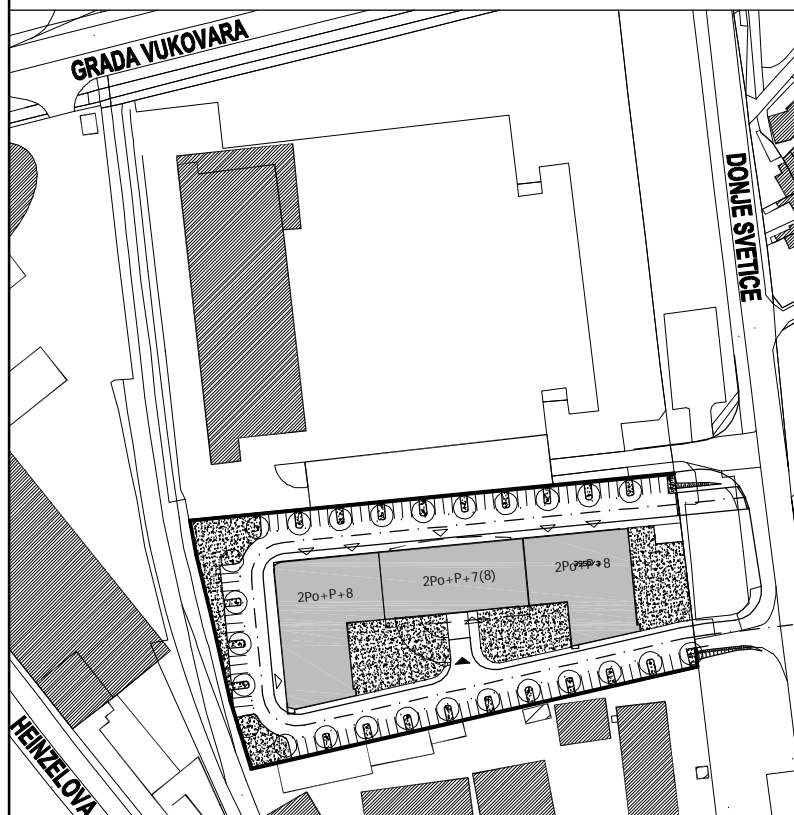


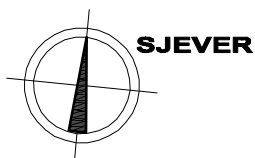
POLOŽAJ U GRADU



POLOŽAJ U ZGRADI



SITUACIJA



MJ 1:100

STAN B15 - DVOSOBNI - 3. KAT

1. ULAZ	4.72 m2
2. KUHINJA	4.53 m2
3. KUPAONICA	3.69 m2
4. DNEVNI BORAVAK	19.54 m2
5. SOBA	11.74 m2
6. LOGIA	3.26x0.75=2.44 m2
UKUPNO	46.66 m2



PROČELJE ZAPAD - ULICA

P = 46.66 m2