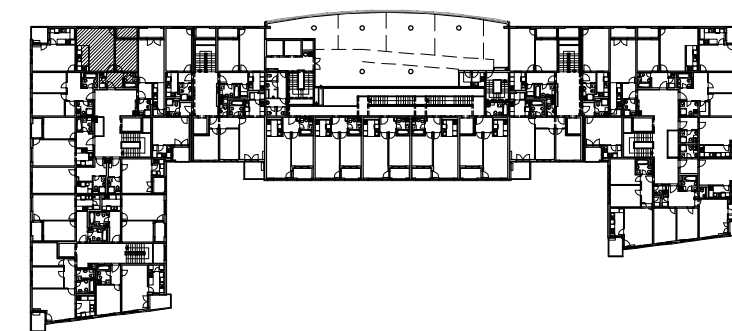
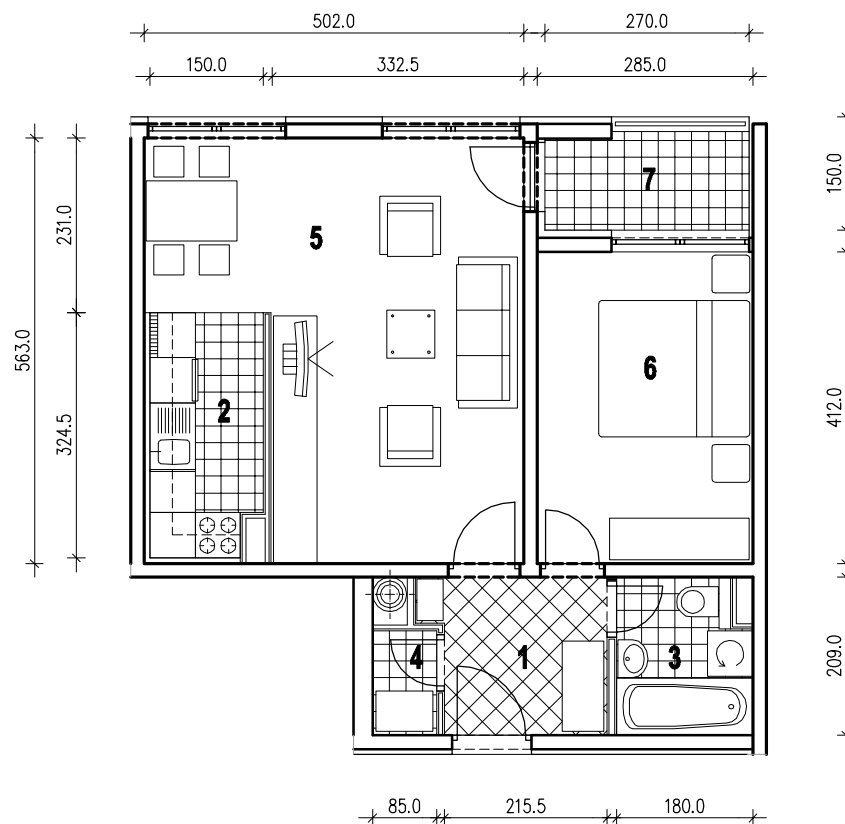
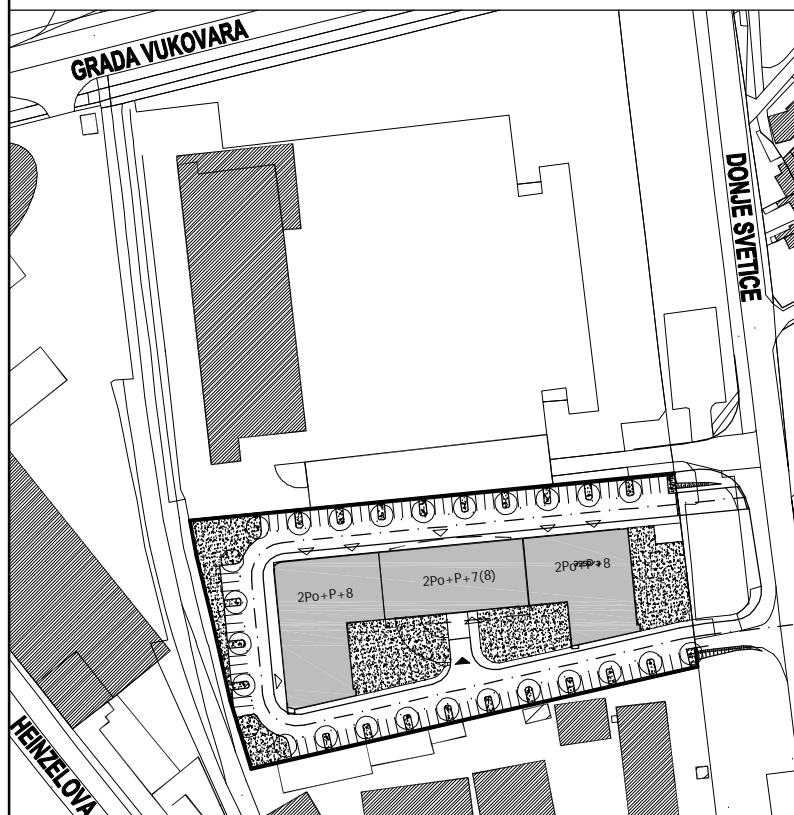


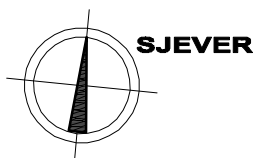
**POLOŽAJ U GRADU**



**POLOŽAJ U ZGRADI**



**SITUACIJA**

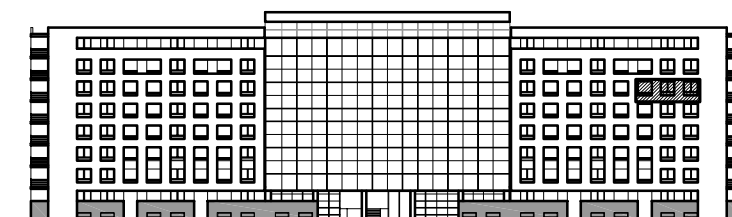


**MJ 1:100**

**STAN B35 - DVOSOBNI - 6. KAT**

1. ULAZ	4.74 m <sup>2</sup>
2. KUHINJA	4.69 m <sup>2</sup>
3. KUPAONICA	3.45 m <sup>2</sup>
4. IZBA	1.17 m <sup>2</sup>
5. DNEVNI BORAVAK	22.65 m <sup>2</sup>
6. SOBA	11.74 m <sup>2</sup>
7. LOGIA	3.43x0.75=2.57 m <sup>2</sup>
<b>UKUPNO</b>	<b>51.01 m<sup>2</sup></b>

**P = 51.01 m<sup>2</sup>**



**SJEVERNO PROČELJE**