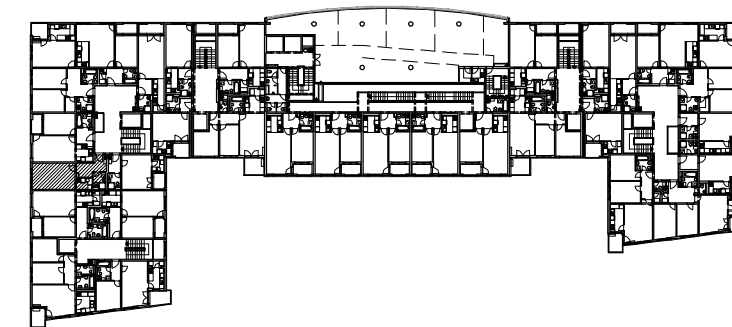
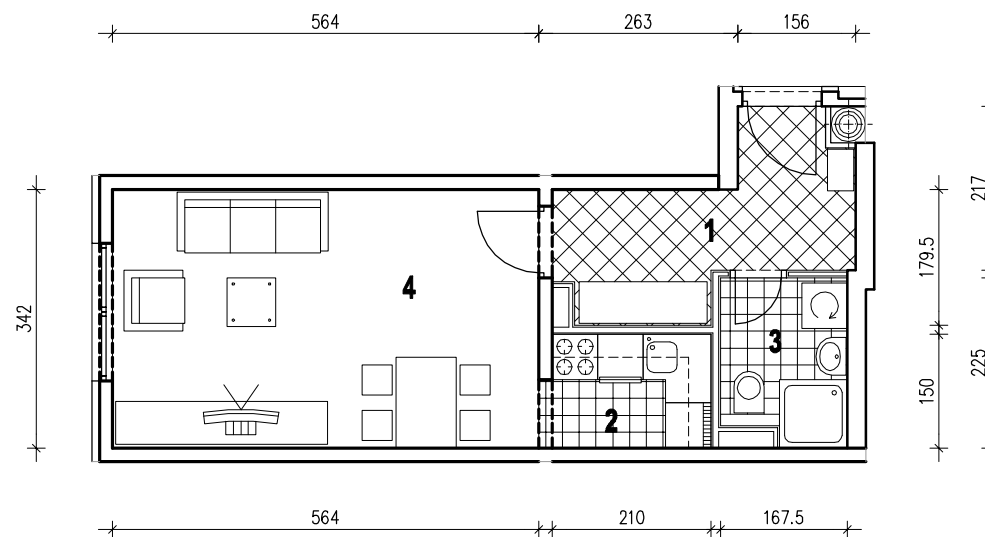
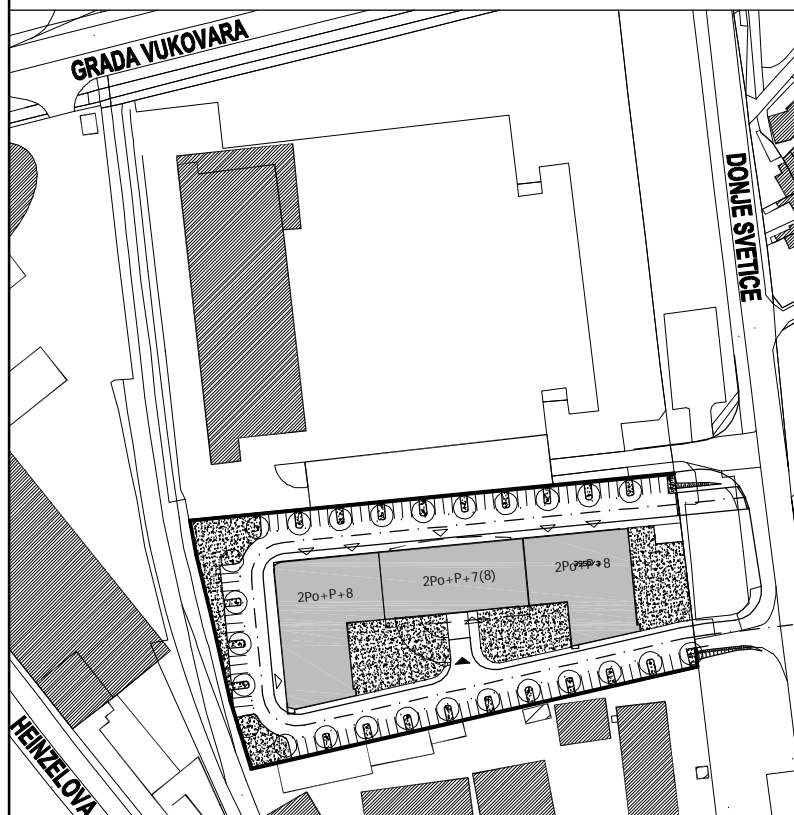


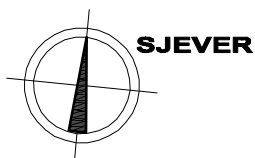
POLOŽAJ U GRADU



POLOŽAJ U ZGRADI



SITUACIJA



MJ 1:100

STAN B38 - JEDNOSOBNI - 7. KAT

1. ULAZ	7.14 m ²
2. KUHINJA	3.31 m ²
3. KUPAONICA	3.42 m ²
4. DNEVNI BORAVAK	19.25 m ²
UKUPNO	33.12 m²



PROČELJE ZAPAD - ULICA

P = 33.12 m²