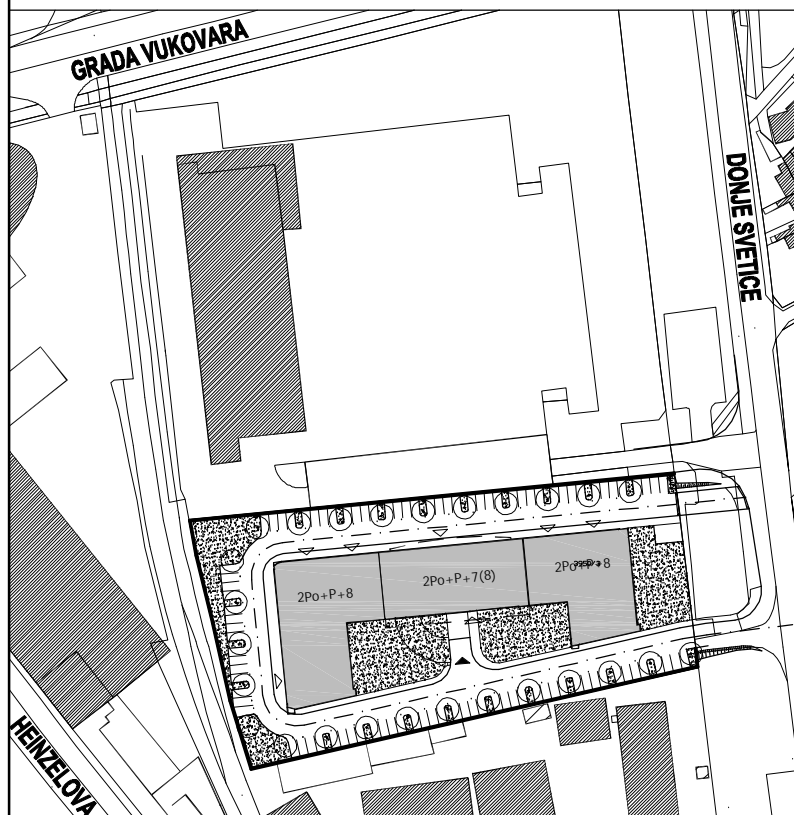
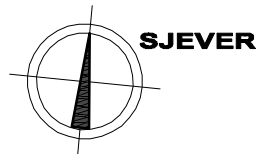
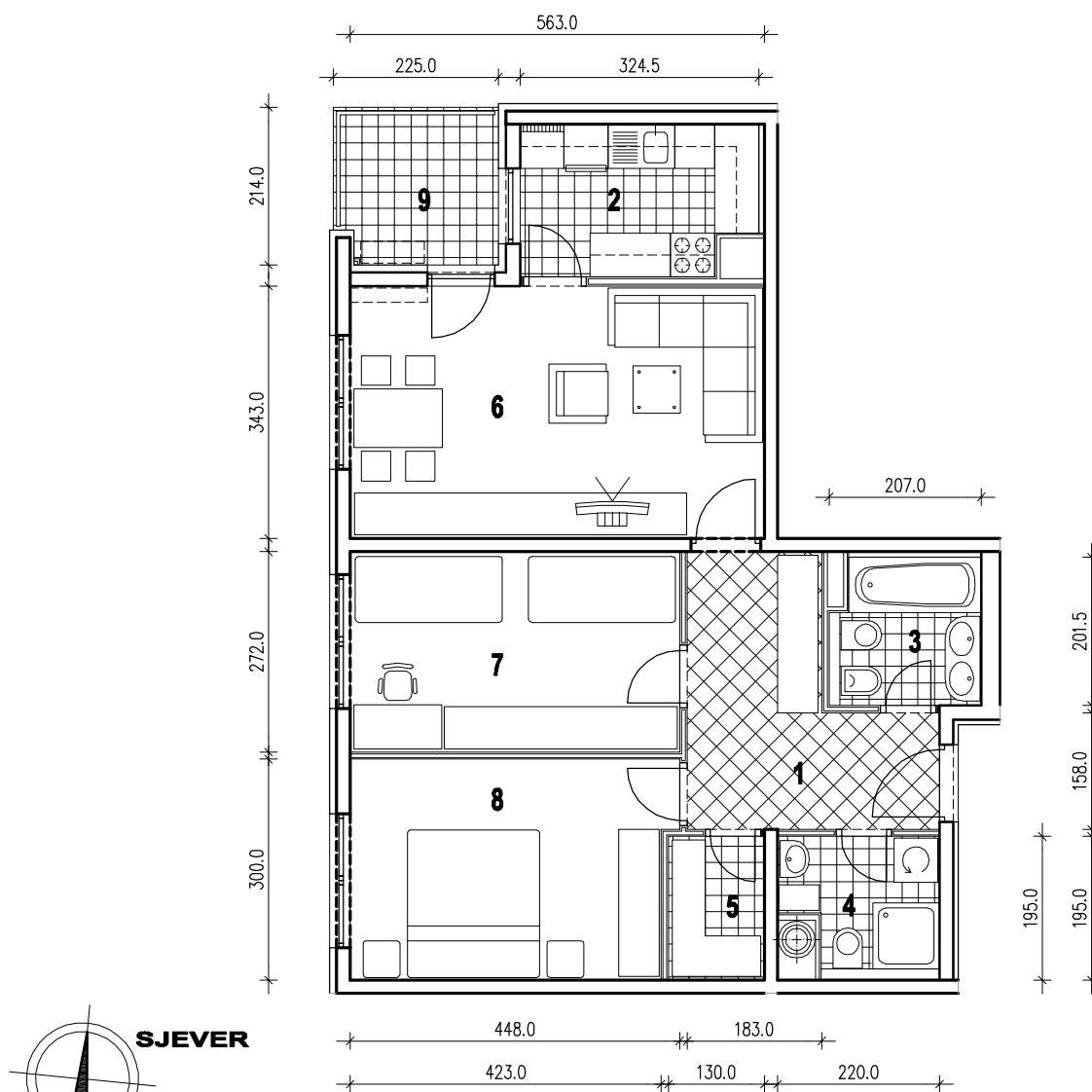


POLOŽAJ U GRADU



SITUACIJA

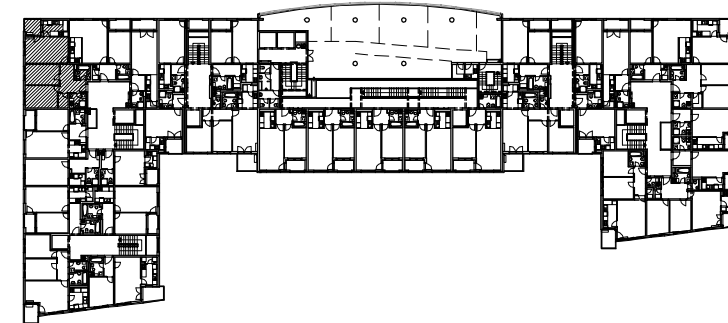


MJ 1:100

STAN B40 - TROSOBNI - 7. KAT

1. ULAZ	9.43 m ²
2. KUHINJA	6.37 m ²
3. KUPAONICA	3.78 m ²
4. WC	3.53 m ²
5. IZBA	2.53 m ²
6. DNEVNI BORAVAK	19.31 m ²
7. SOBA	12.16 m ²
8. SOBA	12.90 m ²
9. LOGIA	4.68x0.75=3.51 m ²
UKUPNO	73.52 m²

P = 73.52 m²



POLOŽAJ U ZGRADI



PROČELJE ZAPAD - ULICA