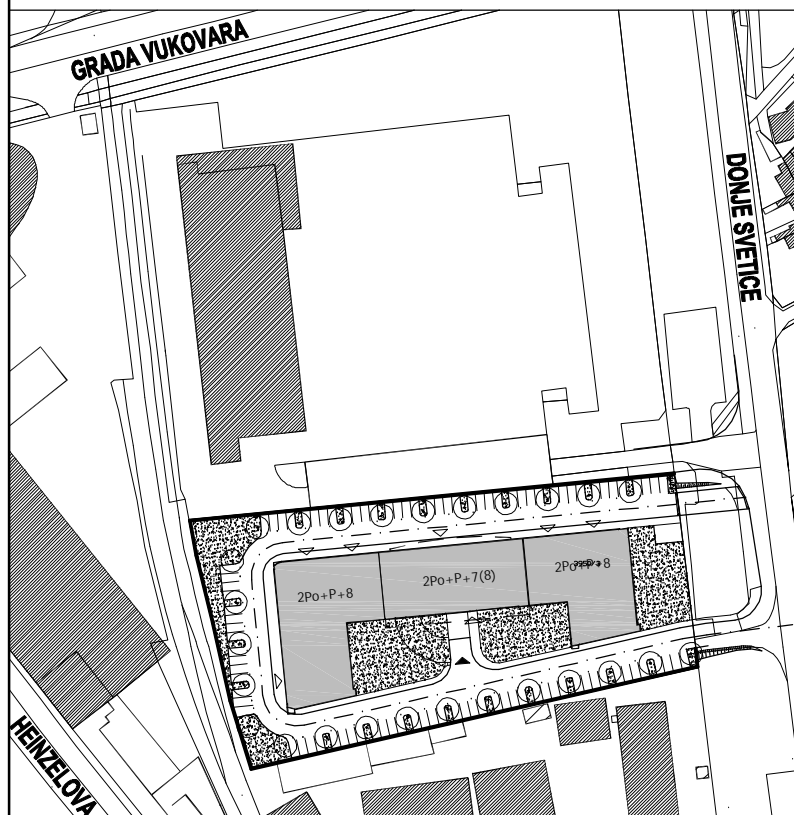
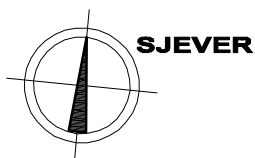
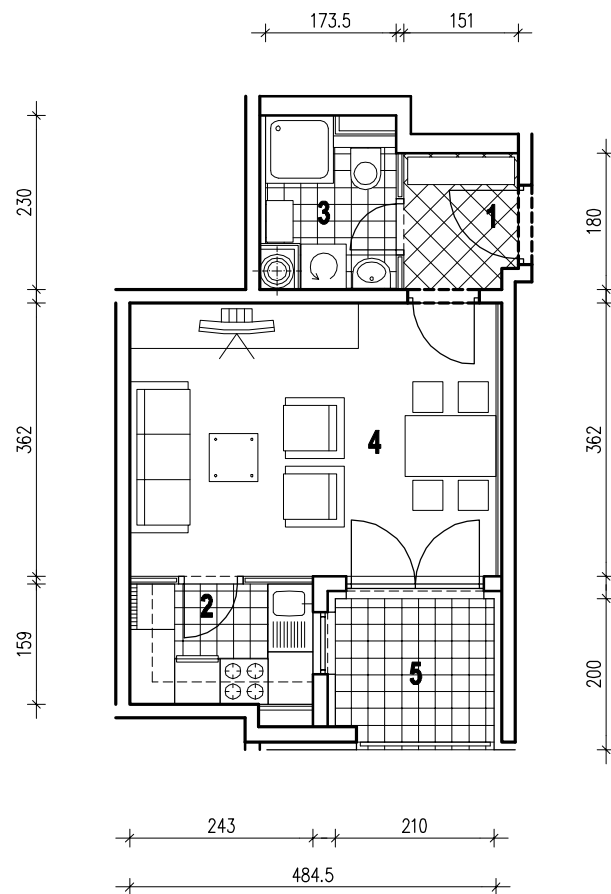


POLOŽAJ U GRADU



SITUACIJA

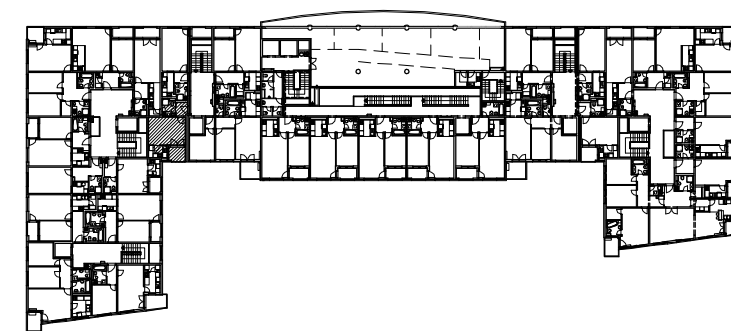


MJ 1:100

STAN C30 - JEDNOSOBNI - 8. KAT

1. ULAZ	2.66 m ²
2. KUHINJA	3.86 m ²
3. KUPAONICA	3.36 m ²
4. DNEVNI BORAVAK	17.54 m ²
5. LOGIA	4.20x0.75=3.15 m ²
UKUPNO	30.57 m²

P = 30.57 m²



POLOŽAJ U ZGRADI



JUŽNO PROČELJE