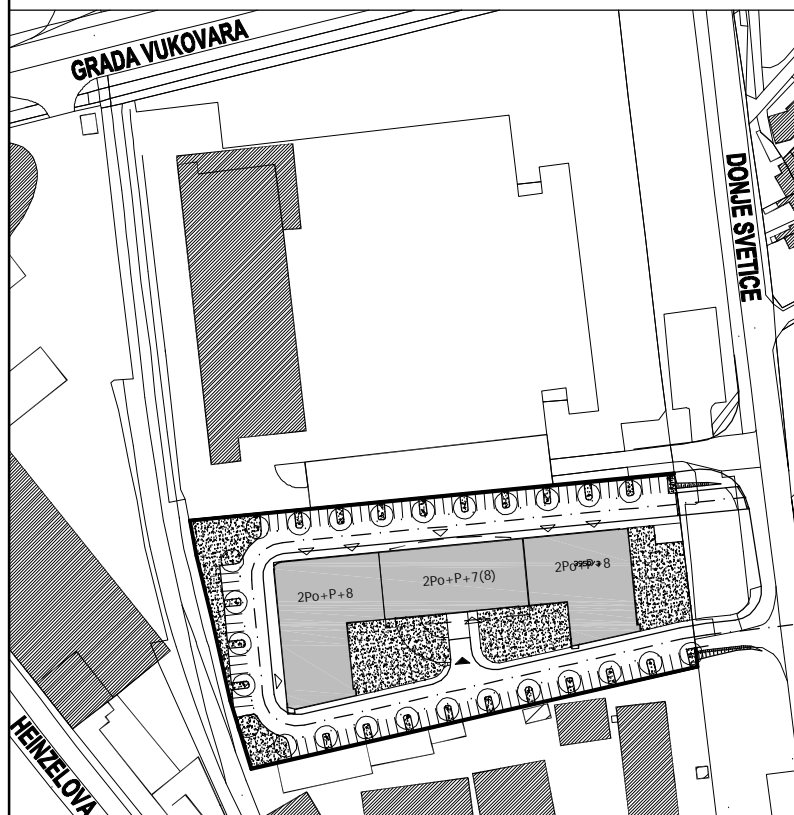
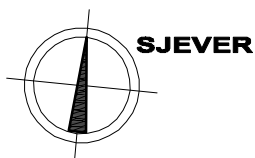
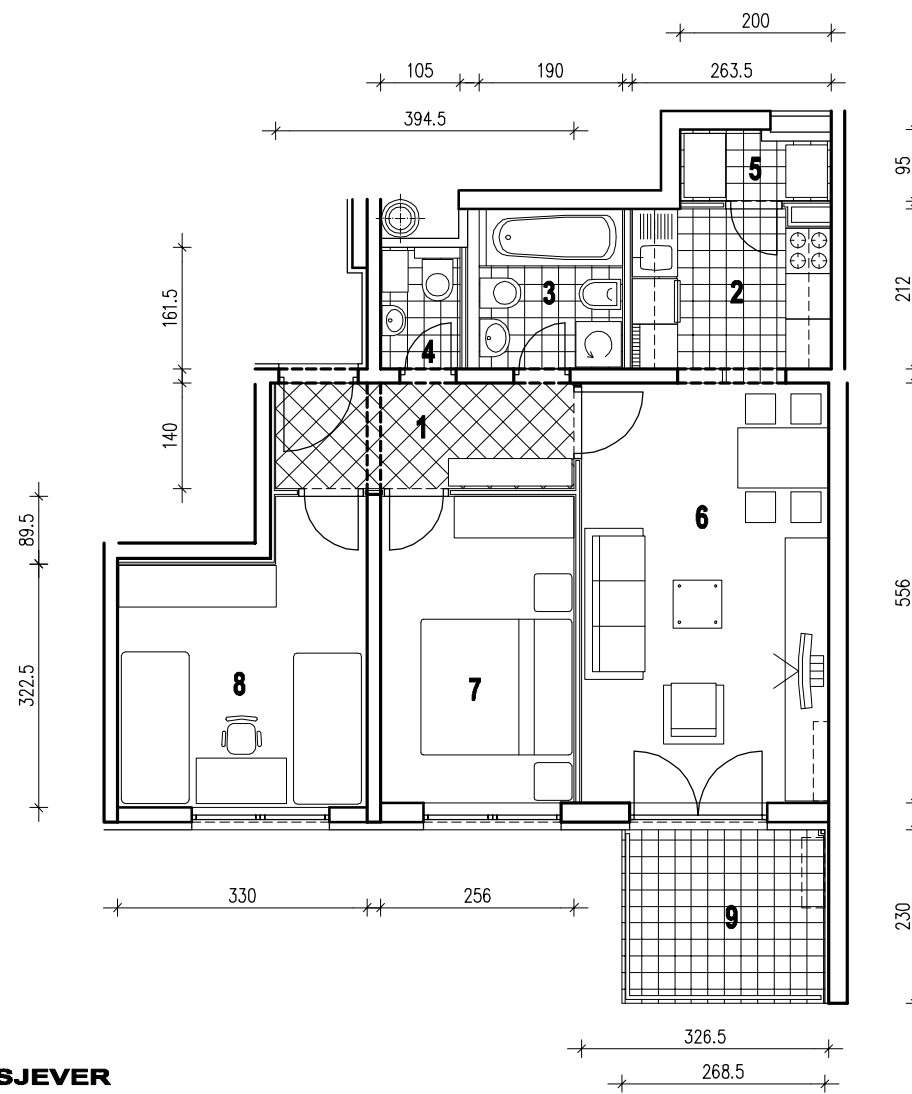


**POLOŽAJ U GRADU**



**SITUACIJA**

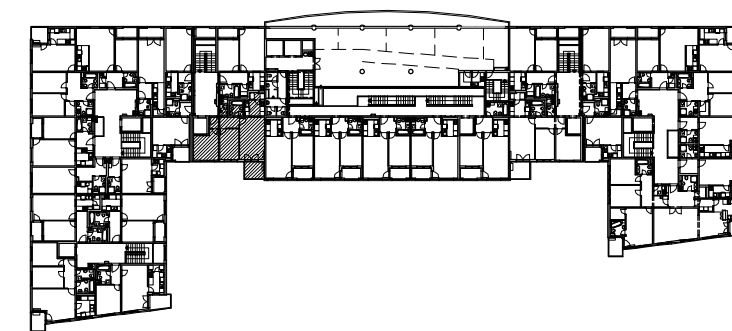


**MJ 1:100**

**STAN C31 - TROSOBNI - 8. KAT**

1. ULAZ	5.52 m <sup>2</sup>
2. KUHINJA	5.58 m <sup>2</sup>
3. KUPAONICA	4.03 m <sup>2</sup>
4. WC	1.61 m <sup>2</sup>
5. IZBA	1.76 m <sup>2</sup>
6. DNEVNI BORAVAK	18.15 m <sup>2</sup>
7. SOBA	10.39 m <sup>2</sup>
8. SOBA	11.72 m <sup>2</sup>
9. LOGIA	6.18x0.75=4.63 m <sup>2</sup>
<b>UKUPNO</b>	<b>63.39 m<sup>2</sup></b>

**P = 63.39 m<sup>2</sup>**



**POLOŽAJ U ZGRADI**



**JUŽNO PROČELJE**