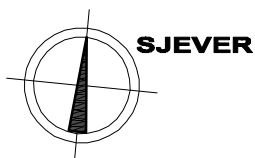
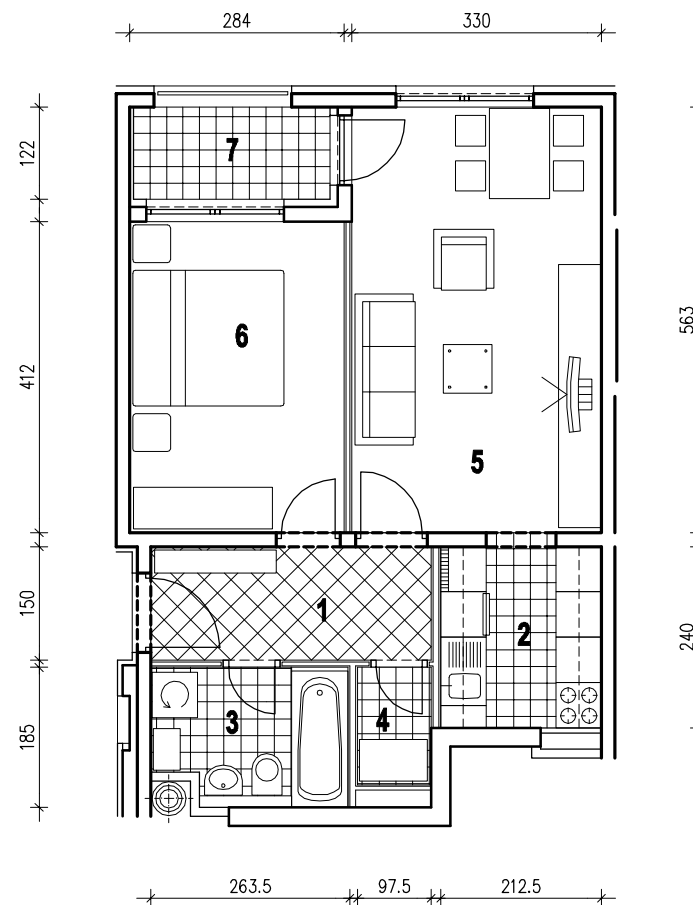


POLOŽAJ U GRADU

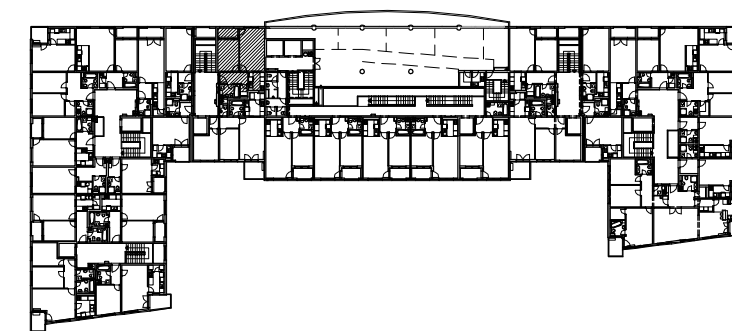


MJ 1:100

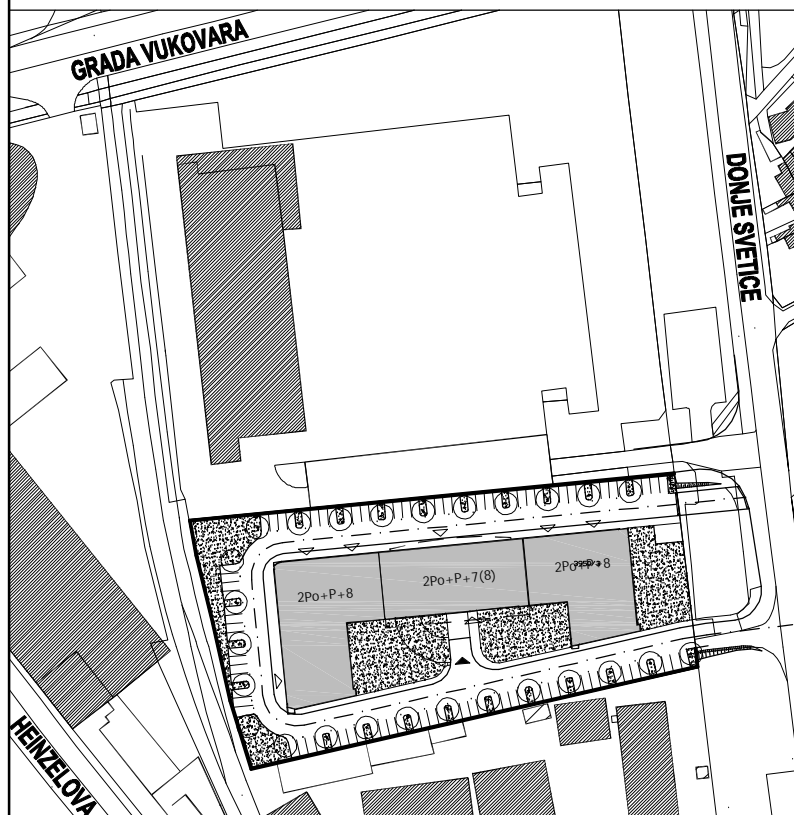
STAN C32 - DVOSOBNI - 8. KAT

1. ULAZ	5.56 m ²
2. KUHINJA	5.27 m ²
3. KUPAONICA	4.38 m ²
4. IZBA	1.51 m ²
5. DNEVNI BORAVAK	18.55 m ²
6. SOBA	11.70 m ²
7. LOGIA	3.17x0.75=2.38 m ²
UKUPNO	49.35 m²

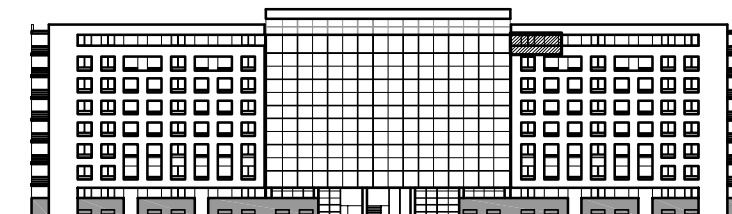
P = 49.35 m²



POLOŽAJ U ZGRADI



SITUACIJA



SJEVERNO PROČELJE