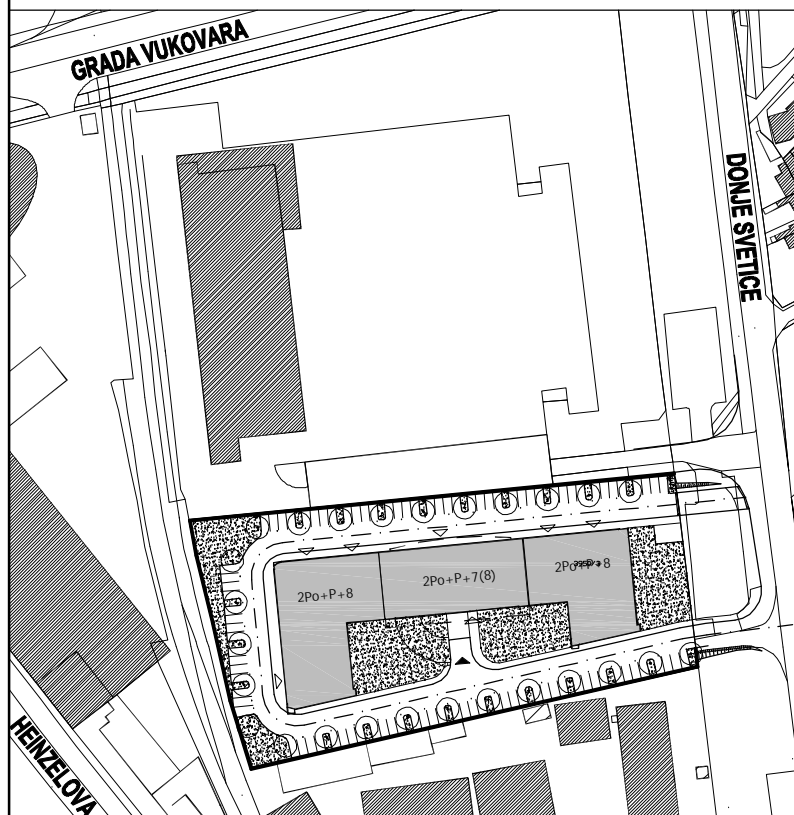
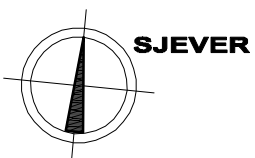
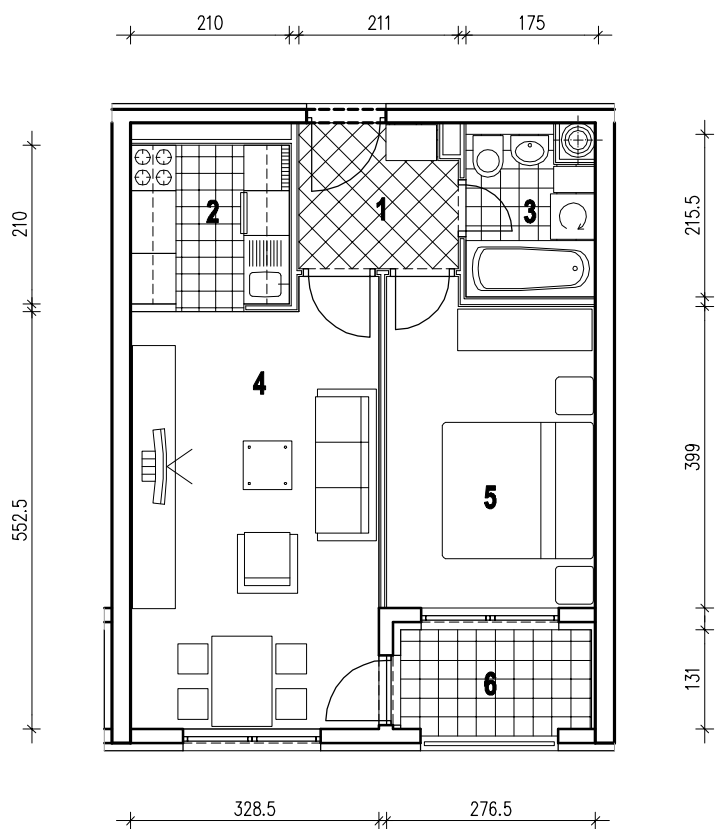


POLOŽAJ U GRADU



SITUACIJA

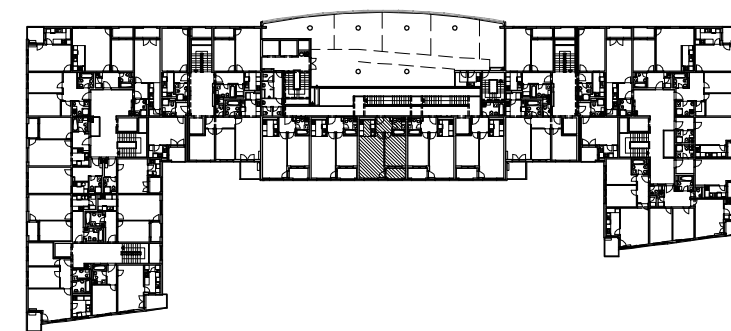


MJ 1:100

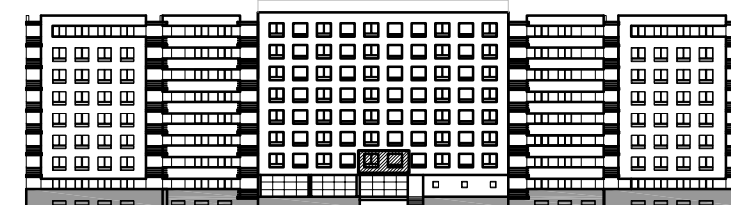
STAN D3 - DVOSOBNI - 2. KAT

1. ULAZ	3.93 m ²
2. KUHINJA	4.41 m ²
3. KUPAONICA	3.47 m ²
4. DNEVNI BORAVAK	18.64 m ²
5. SOBA	11.41 m ²
6. LOGIA	3.47x0.75=2.60 m ²
UKUPNO	44.46 m²

P = 44.46 m²



POLOŽAJ U ZGRADI



JUŽNO PROČELJE