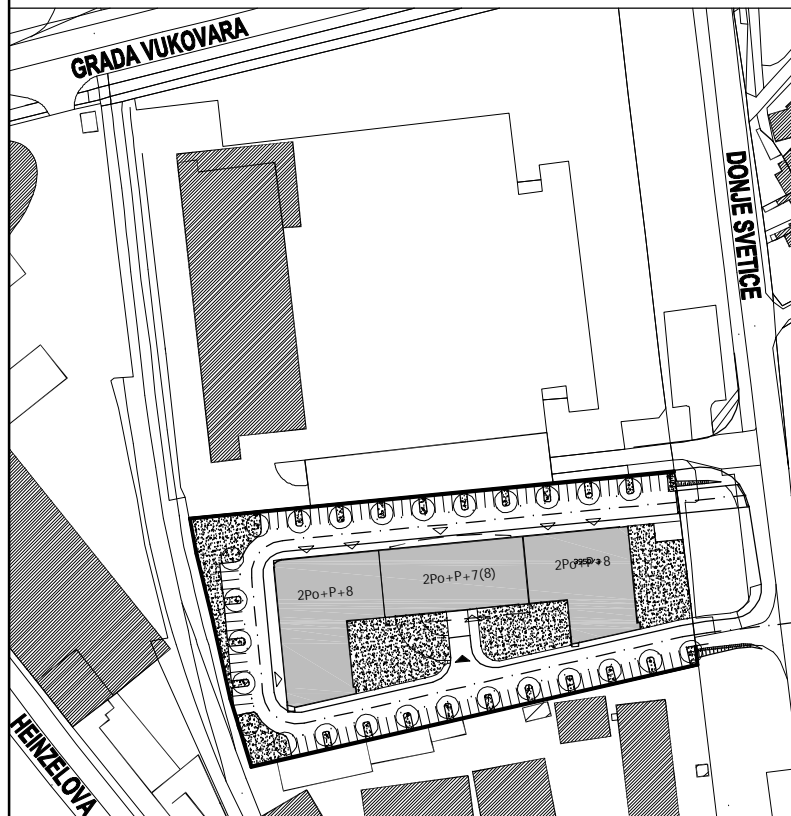
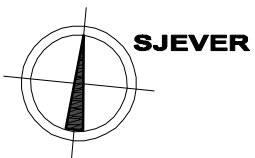
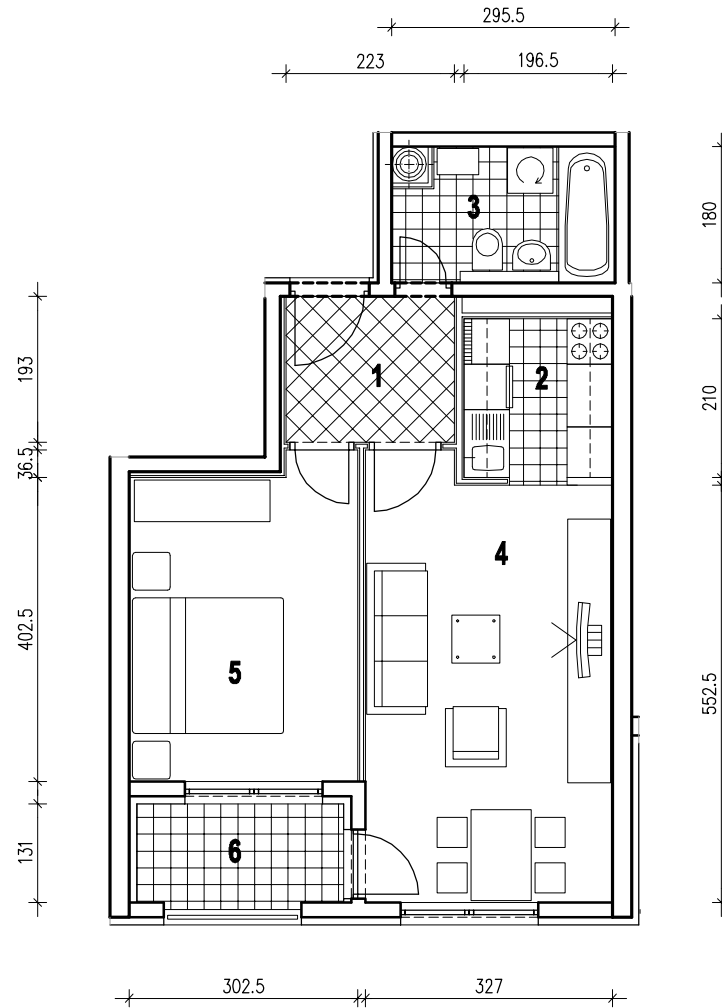


POLOŽAJ U GRADU



SITUACIJA

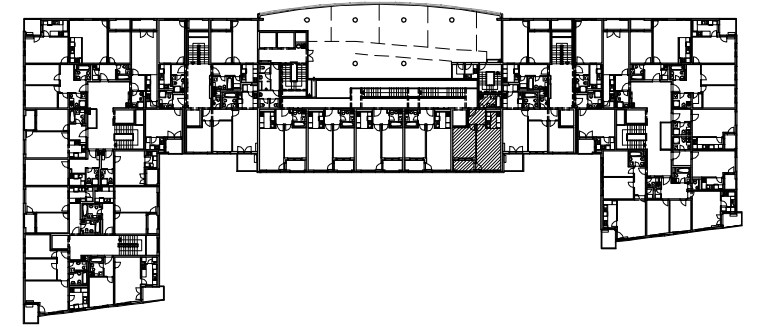


MJ 1:100

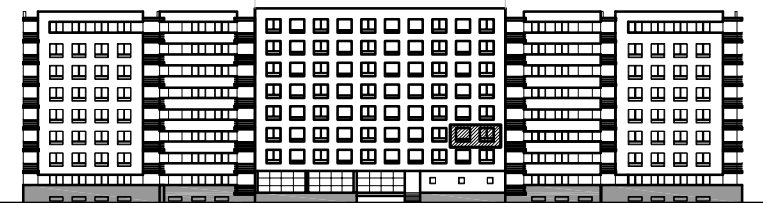
STAN D6 - DVOSOBNI - 3. KAT

1. ULAZ	4.30 m ²
2. KUHINJA	4.13 m ²
3. KUPAONICA	4.82 m ²
4. DNEVNI BORAVAK	18.62 m ²
5. SOBA	12.52 m ²
6. LOGIA	3.75x0.75=2.81 m ²
UKUPNO	47.20 m²

P = 47.20 m²



POLOŽAJ U ZGRADI



JUŽNO PROČELJE