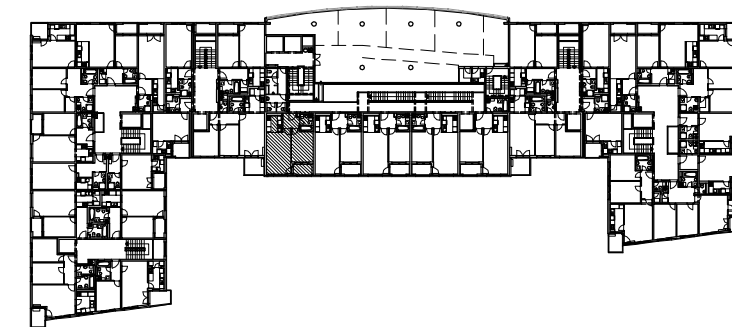
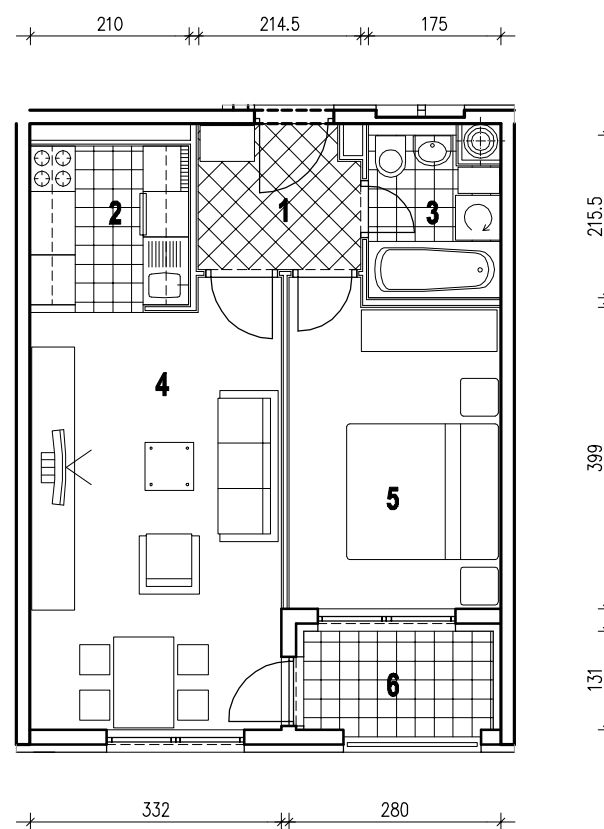
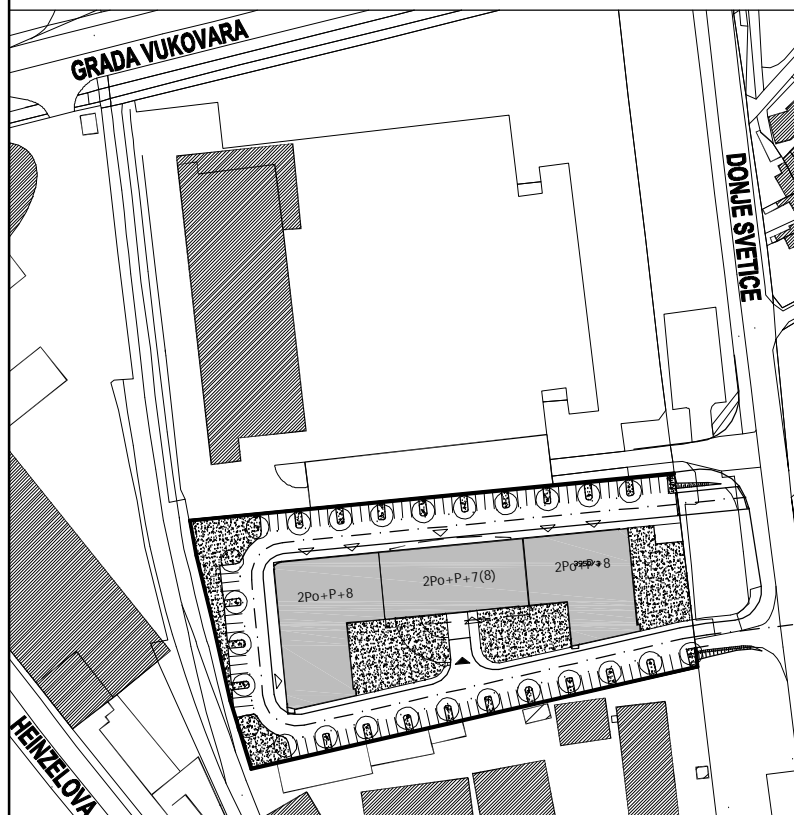


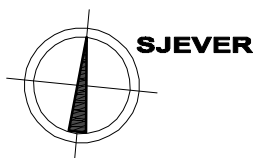
POLOŽAJ U GRADU



POLOŽAJ U ZGRADI



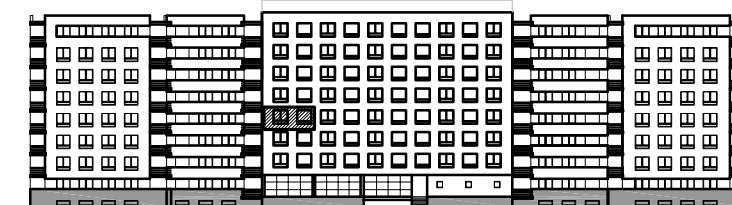
SITUACIJA



MJ 1:100

STAN D15 - DVOSOBNI - 4. KAT

| | |
|--------------------------|-------------------------------------|
| 1. ULAZ | 3.98 m² |
| 2. KUHINJA | 4.41 m² |
| 3. KUPAONICA | 3.53 m² |
| 4. DNEVNI BORAVAK | 18.85 m² |
| 5. SOBA | 11.55 m² |
| 6. LOGIA | 3.52x0.75=2.64 m² |
| UKUPNO | 44.96 m² |



JUŽNO PROČELJE

P = 44.96 m²