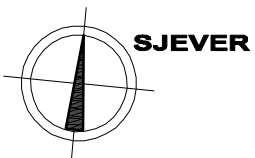
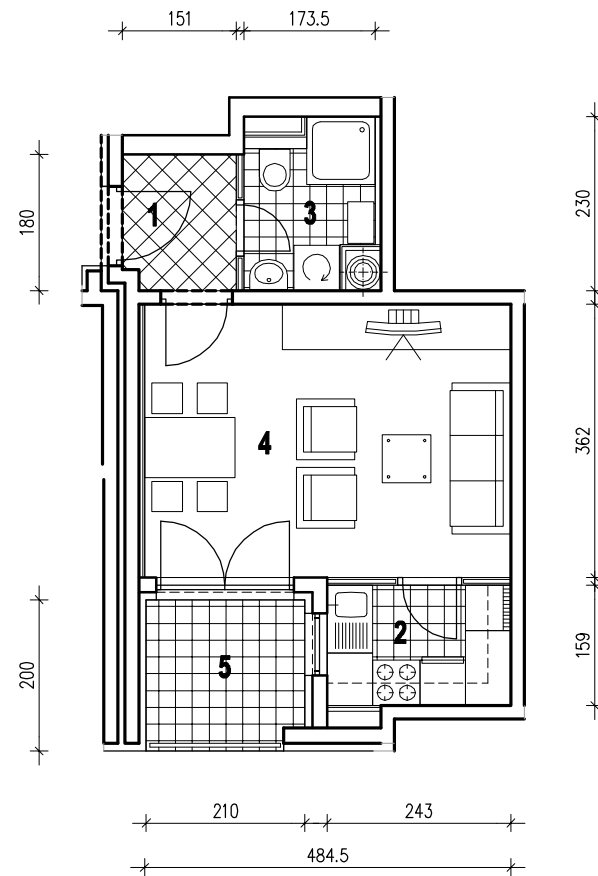


POLOŽAJ U GRADU

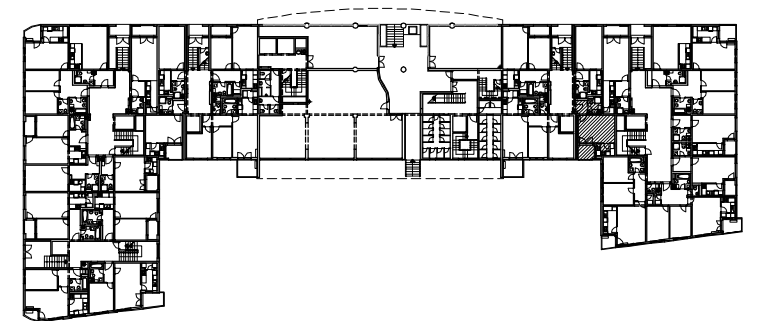


MJ 1:100

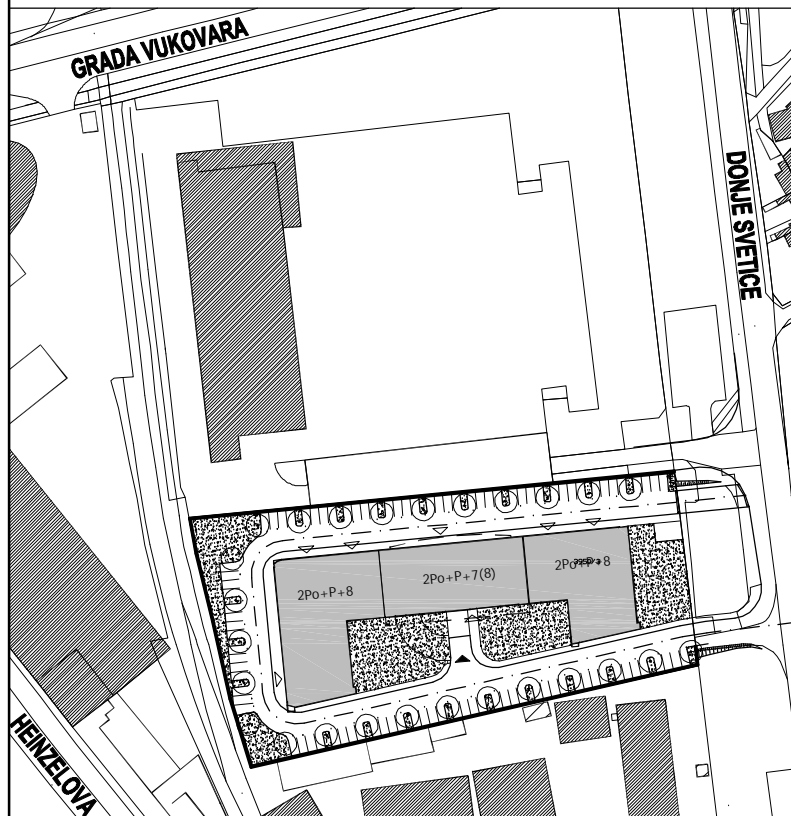
STAN E2 - JEDNOSOBNI - 1. KAT

1. ULAZ	2.66 m2
2. KUHINJA	3.86 m2
3. KUPAONICA	3.36 m2
4. DNEVNI BORAVAK	17.54 m2
5. LOGIA	4.12x0.75=3.09 m2
UKUPNO	30.51 m2

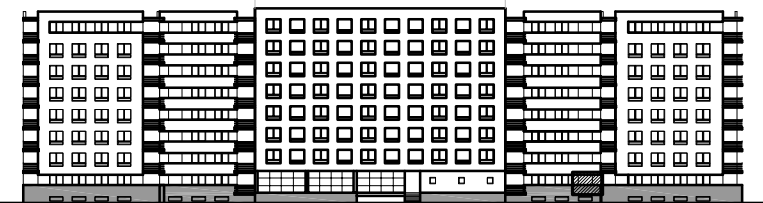
P = 30.51 m2



POLOŽAJ U ZGRADI



SITUACIJA



JUŽNO PROČELJE