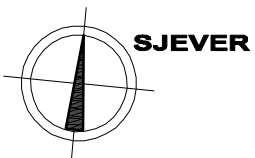
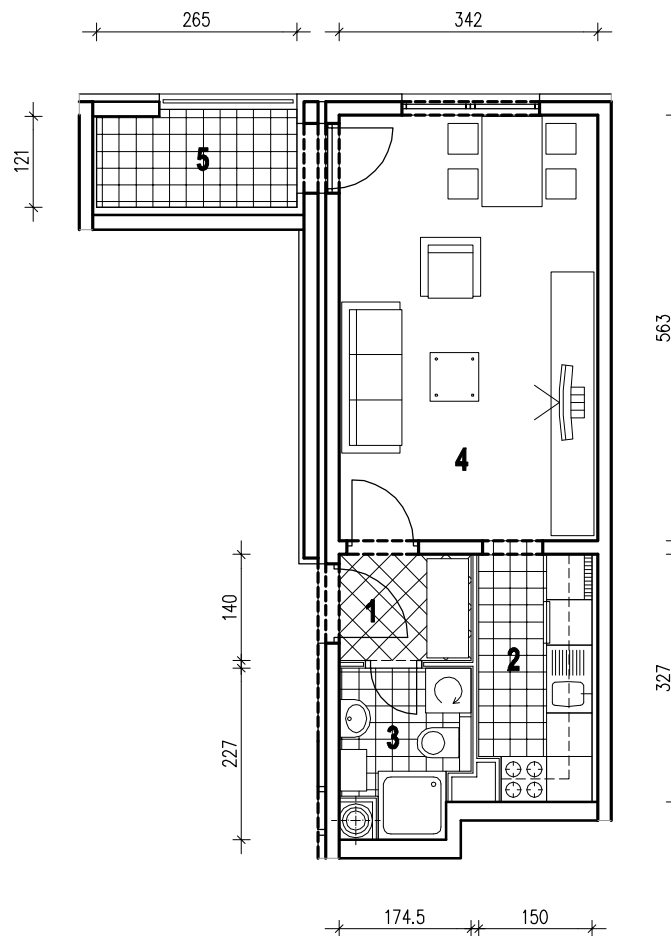


POLOŽAJ U GRADU

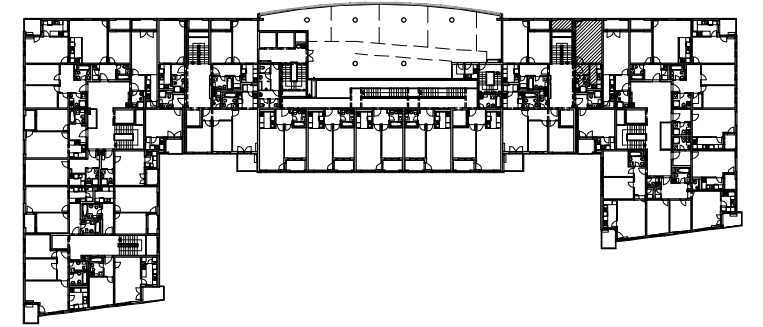


MJ 1:100

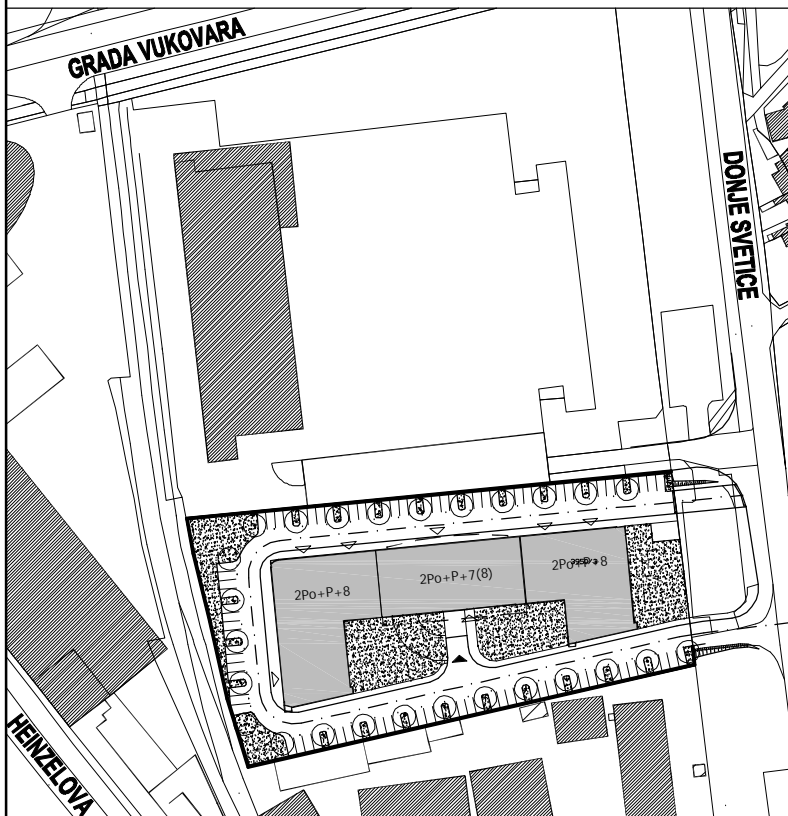
STAN E9 - JEDNOSOBNI - 3. KAT

1. ULAZ	2.44 m²
2. KUHINJA	4.87 m²
3. KUPAONICA	3.26 m²
4. DNEVNI BORAVAK	19.25 m²
5. LOGIA	3.37x0.75=2.53 m²
UKUPNO	32.35 m²

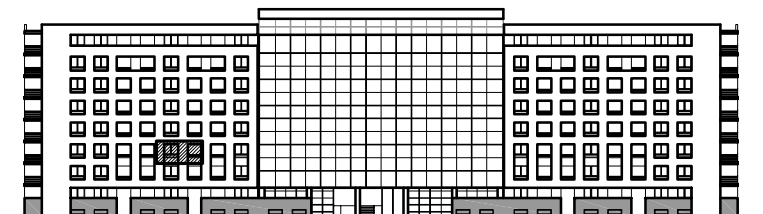
P = 32.35 m²



POLOŽAJ U ZGRADI



SITUACIJA



SJEVERNO PROČELJE