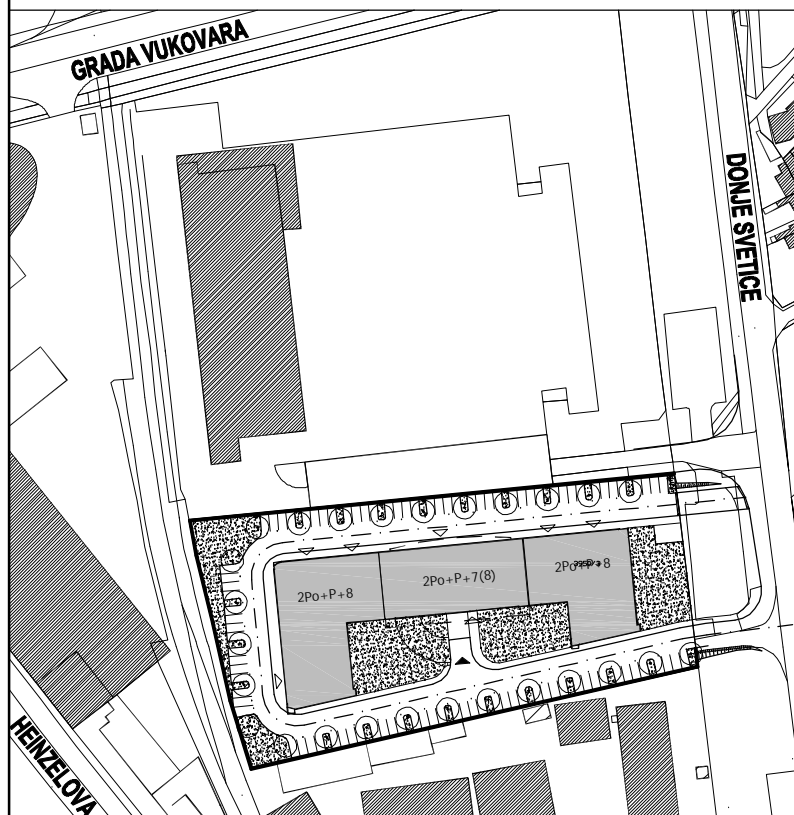
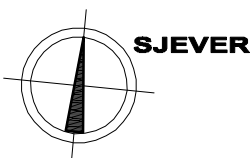
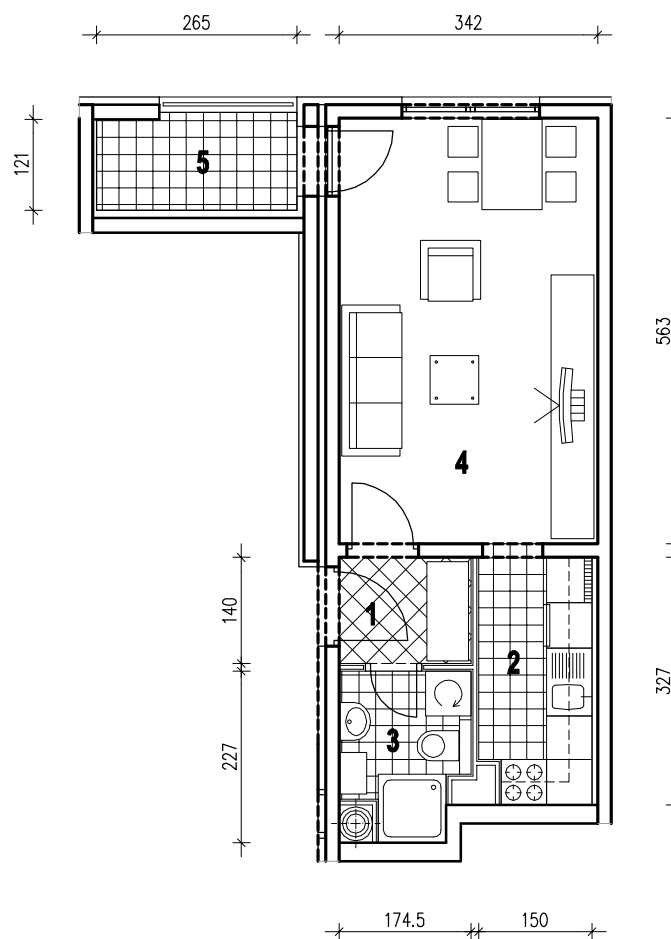


POLOŽAJ U GRADU



SITUACIJA

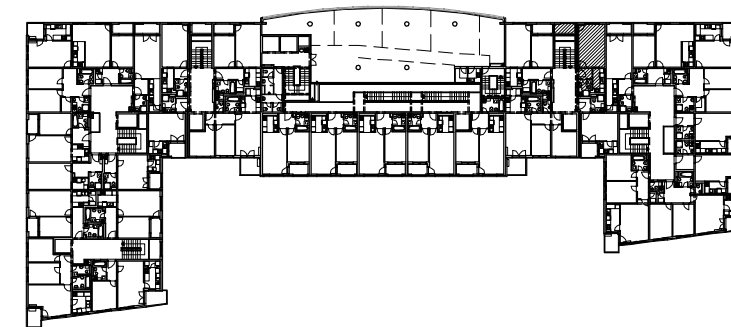


MJ 1:100

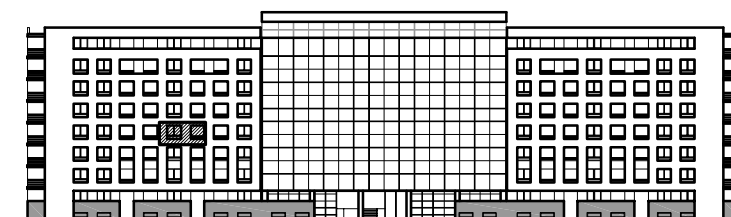
STAN E13 - JEDNOSOBNI - 4. KAT

1. ULAZ	2.44 m ²
2. KUHINJA	4.87 m ²
3. KUPAONICA	3.26 m ²
4. DNEVNI BORAVAK	19.25 m ²
5. LOGIA	3.37x0.75=2.53 m ²
UKUPNO	32.35 m²

P = 32.35 m²



POLOŽAJ U ZGRADI



SJEVERNO PROČELJE