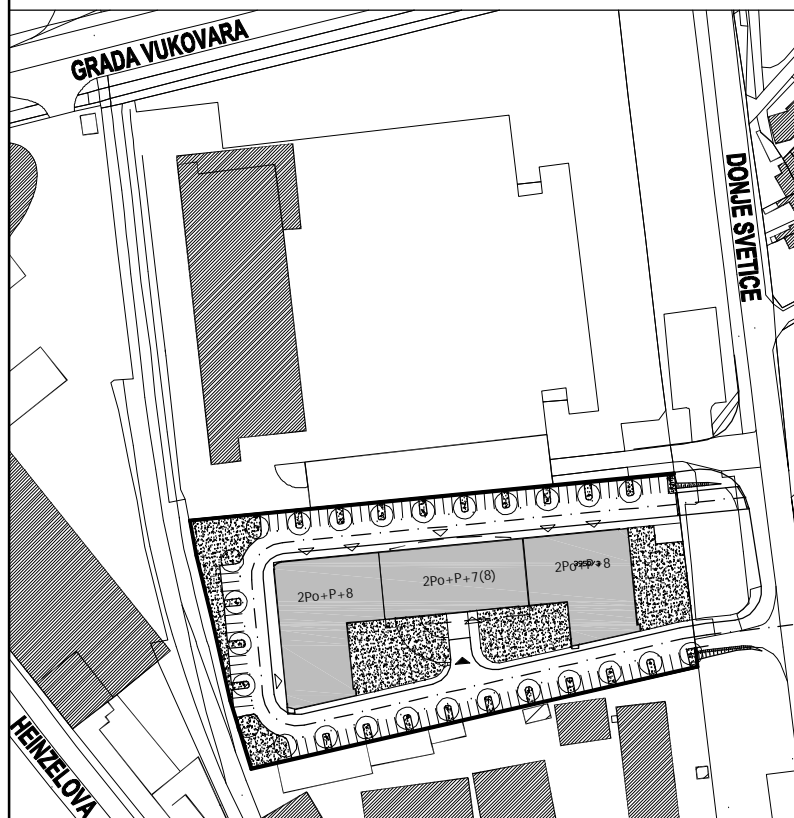
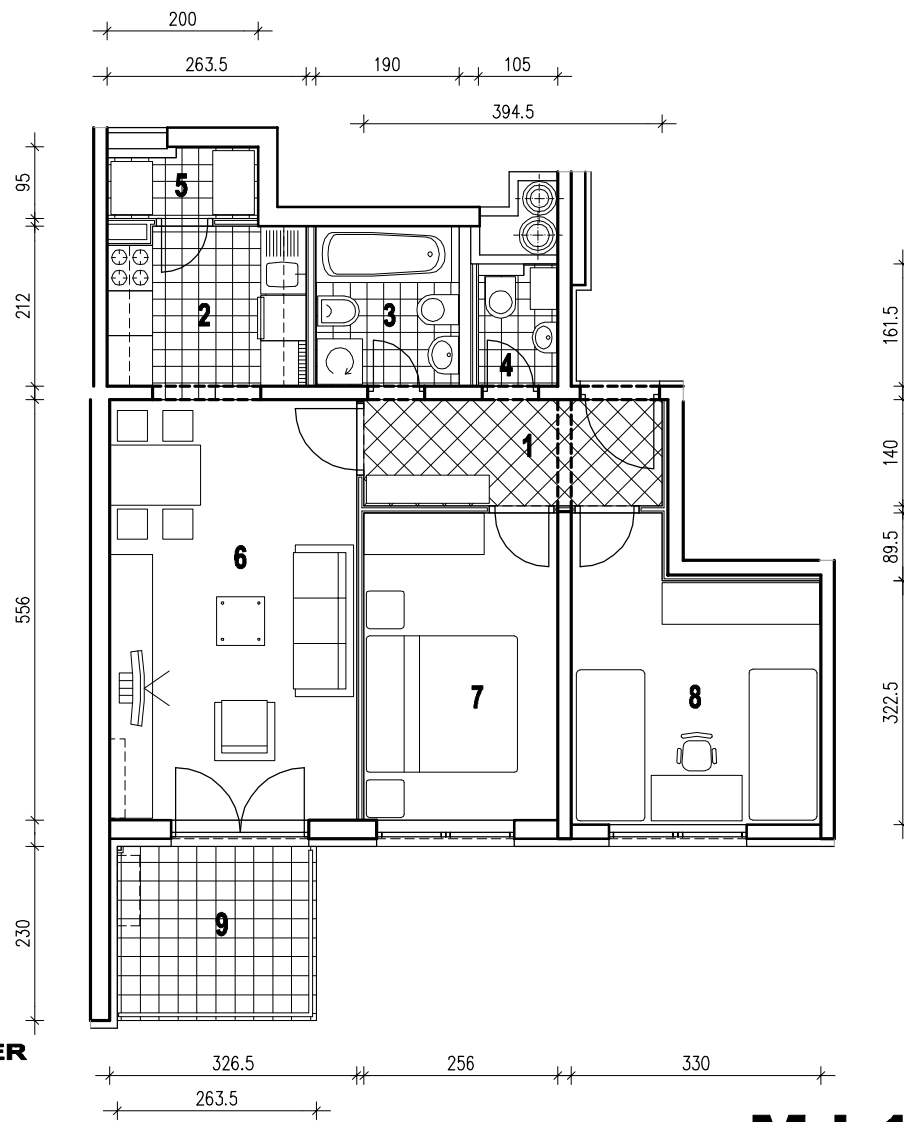


POLOŽAJ U GRADU



SITUACIJA

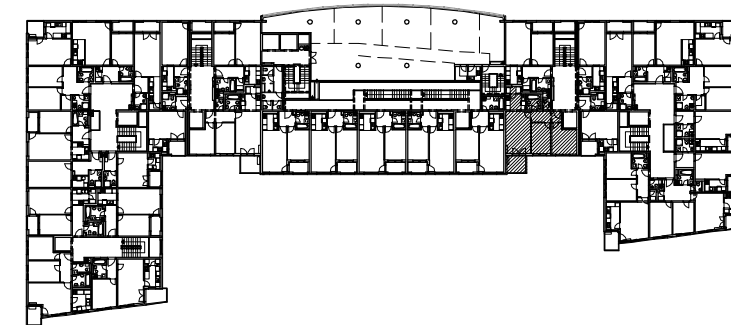


MJ 1:100

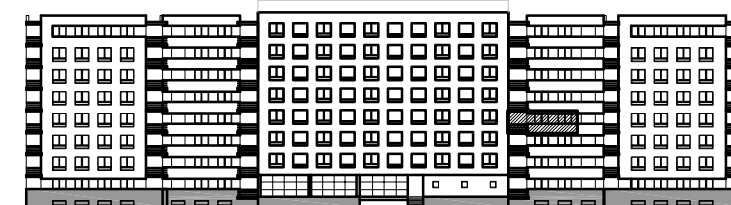
STAN E15 - TROSOBNI - 4. KAT

1. ULAZ	5.52 m2
2. KUHINJA	5.58 m2
3. KUPAONICA	4.03 m2
4. WC	1.61 m2
5. IZBA	1.76 m2
6. DNEVNI BORAVAK	18.15 m2
7. SOBA	10.39 m2
8. SOBA	11.72 m2
9. LOGIA	6.06x0.75=4.54 m2
UKUPNO	63.30 m2

P = 63.30 m2



POLOŽAJ U ZGRADI



JUŽNO PROČELJE