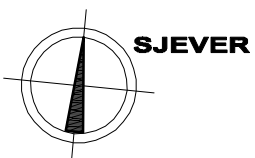
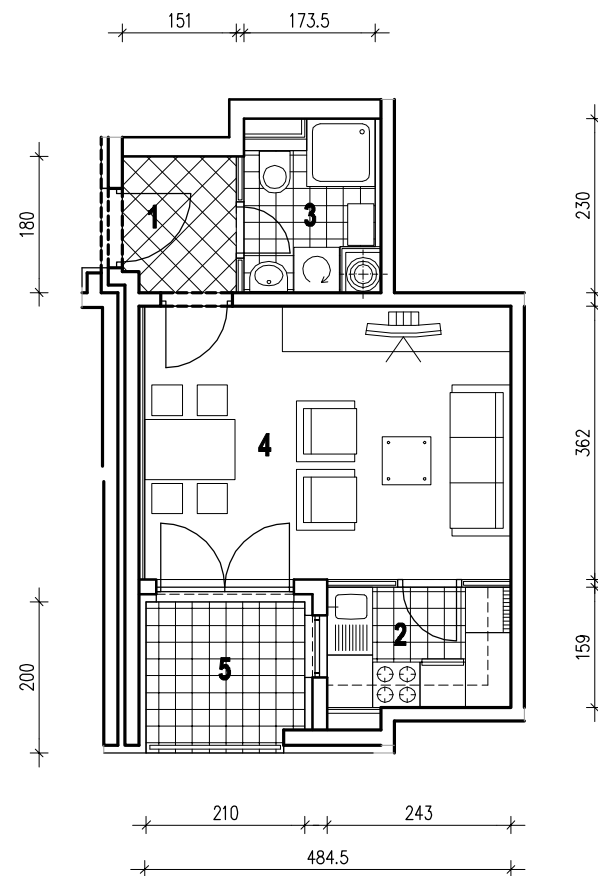


POLOŽAJ U GRADU

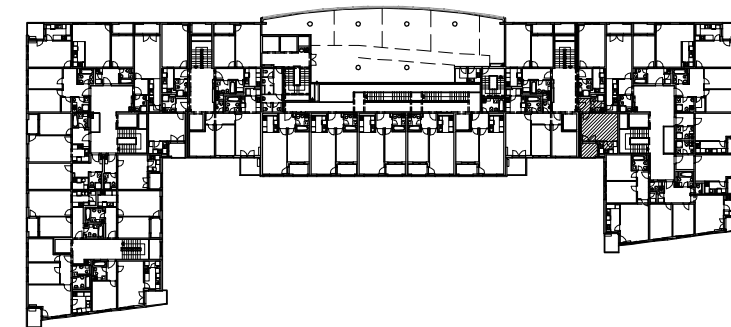


MJ 1:100

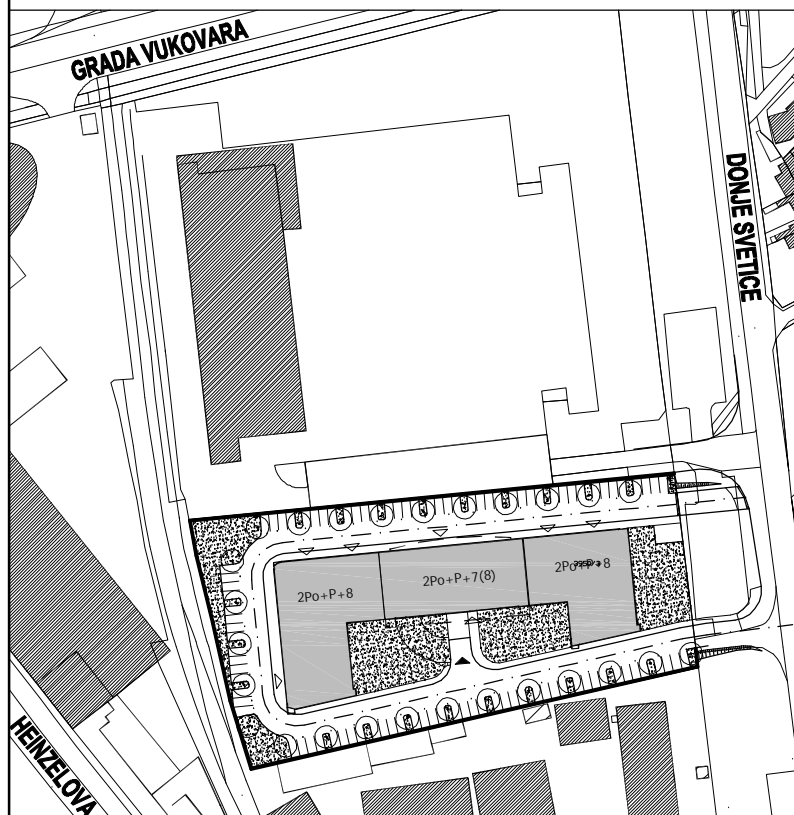
STAN E22 - JEDNOSOBNI - 6. KAT

1. ULAZ	2.66 m ²
2. KUHINJA	3.86 m ²
3. KUPAONICA	3.36 m ²
4. DNEVNI BORAVAK	17.54 m ²
5. LOGIA	4.12x0.75=3.09 m ²
UKUPNO	30.51 m²

P = 30.51 m²



POLOŽAJ U ZGRADI



SITUACIJA



JUŽNO PROČELJE