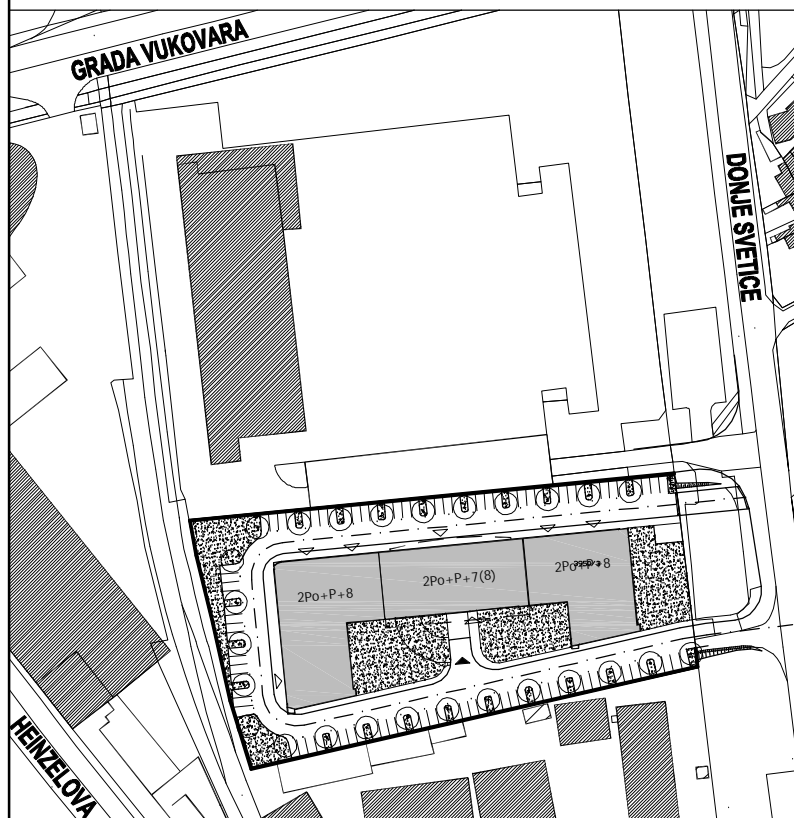
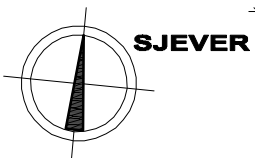
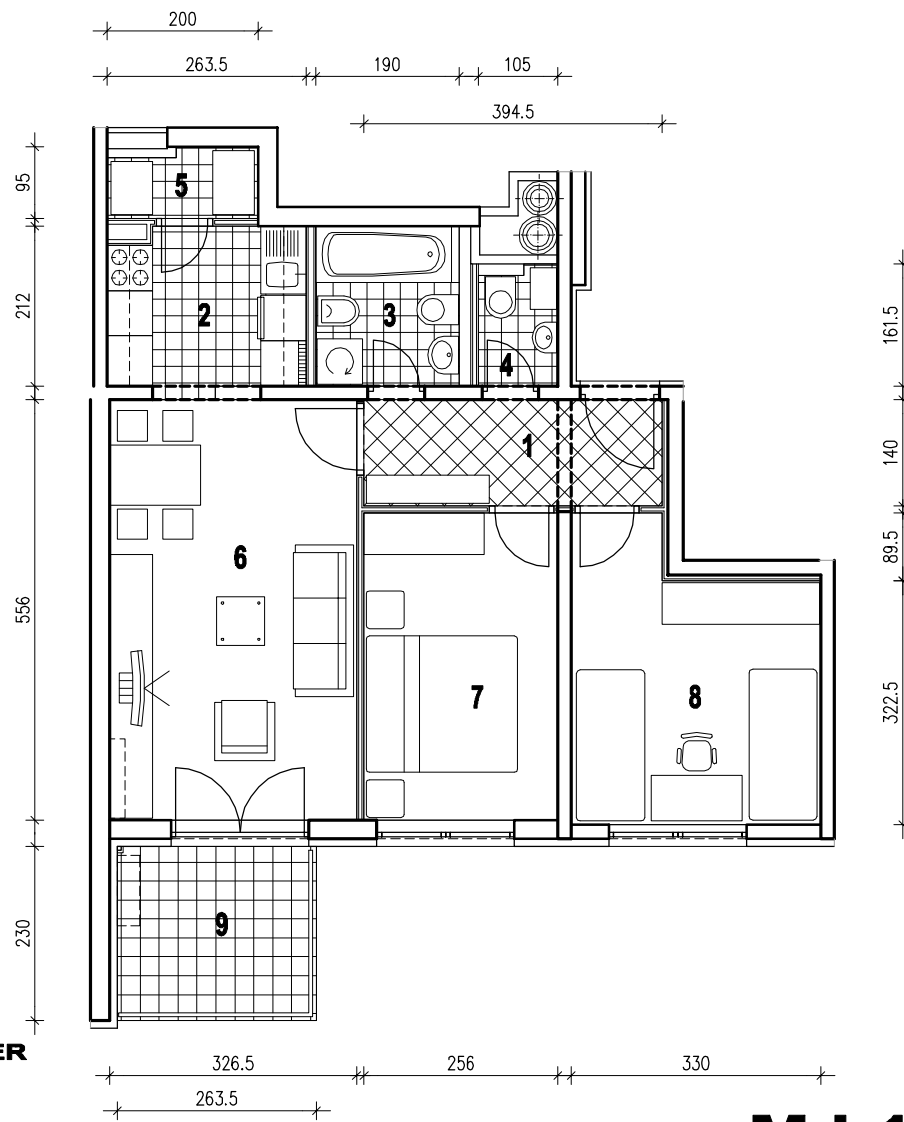


**POLOŽAJ U GRADU**



**SITUACIJA**

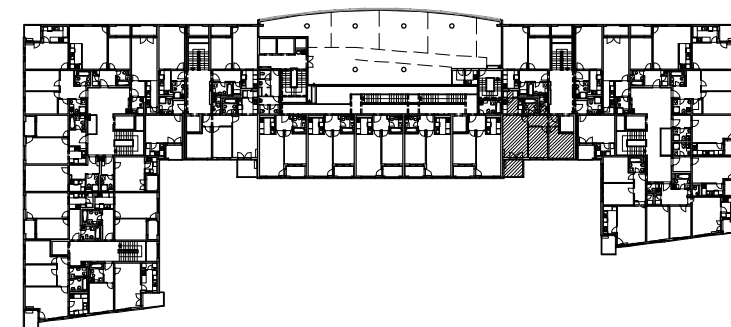


**MJ 1:100**

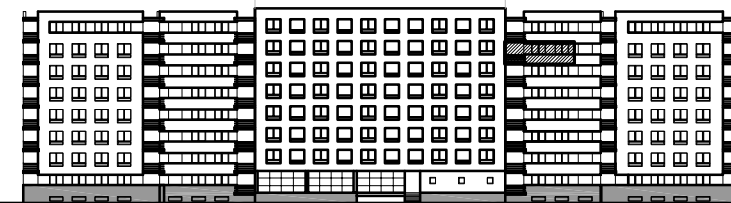
**STAN E27 - TROSOBNI - 7. KAT**

1. ULAZ	5.52 m2
2. KUHINJA	5.58 m2
3. KUPAONICA	4.03 m2
4. WC	1.61 m2
5. IZBA	1.76 m2
6. DNEVNI BORAVAK	18.15 m2
7. SOBA	10.39 m2
8. SOBA	11.72 m2
9. LOGIA	6.06x0.75=4.54 m2
<b>UKUPNO</b>	<b>63.30 m2</b>

**P = 63.30 m2**



**POLOŽAJ U ZGRADI**



**JUŽNO PROČELJE**