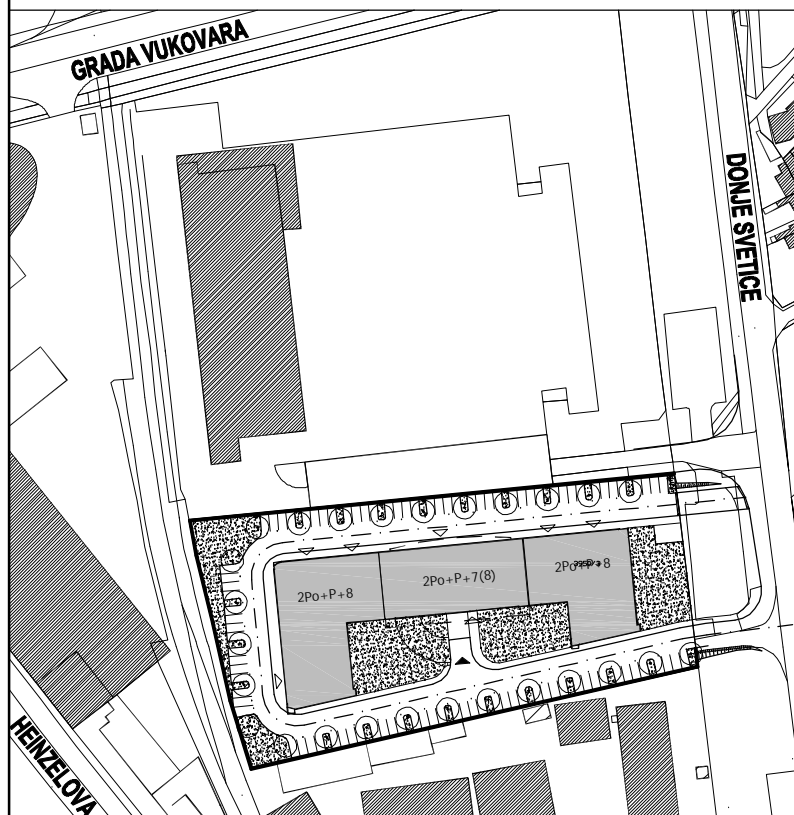
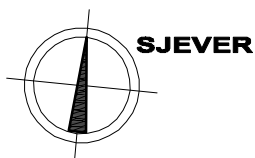
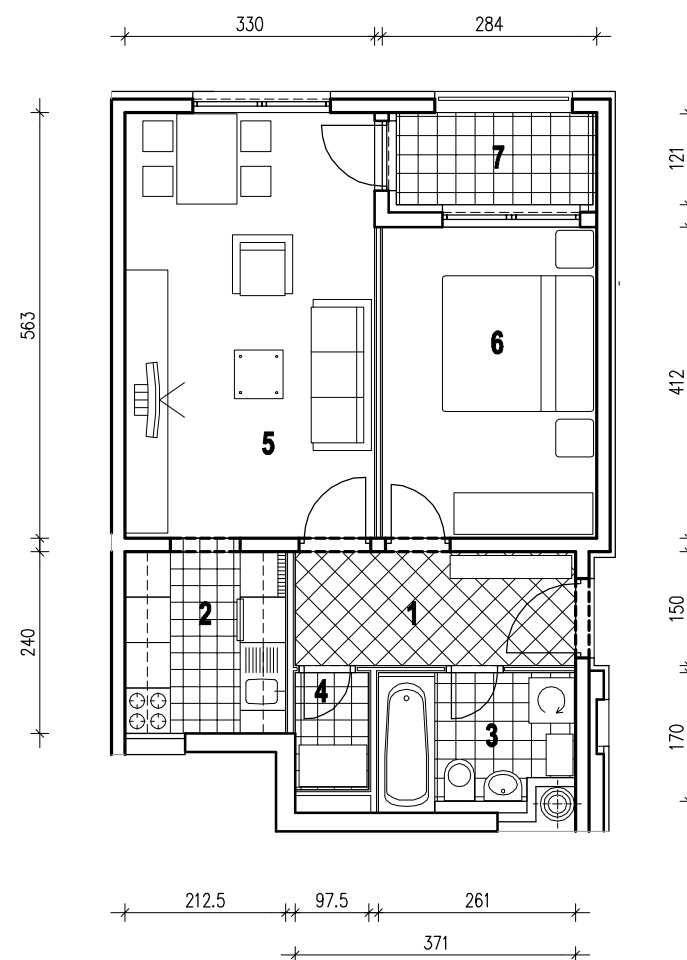


POLOŽAJ U GRADU



SITUACIJA

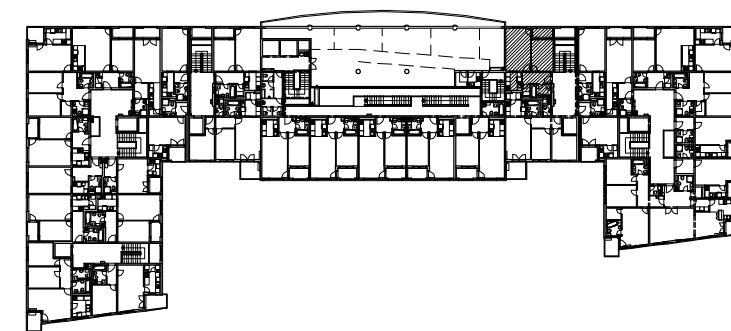


MJ 1:100

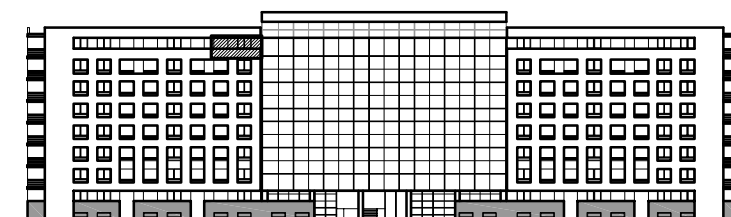
STAN E32 - DVOSOBNI - 8. KAT

1. ULAZ	5.57 m ²
2. KUHINJA	5.27 m ²
3. KUPAONICA	4.35 m ²
4. IZBA	1.51 m ²
5. DNEVNI BORAVAK	18.58 m ²
6. SOBA	11.70 m ²
7. LOGIA	3.17x0.75=2.38 m ²
UKUPNO	49.36 m²

P = 49.36 m²



POLOŽAJ U ZGRADI



SJEVERNO PROČELJE