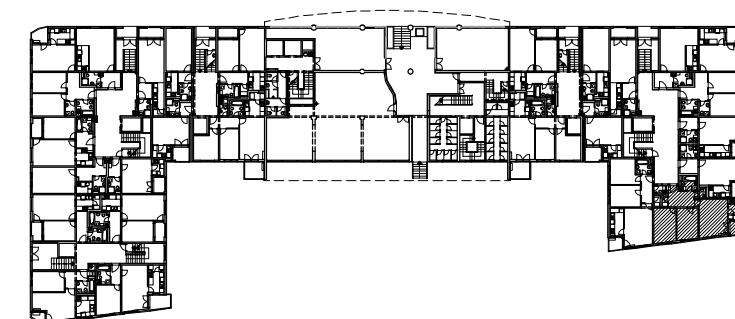
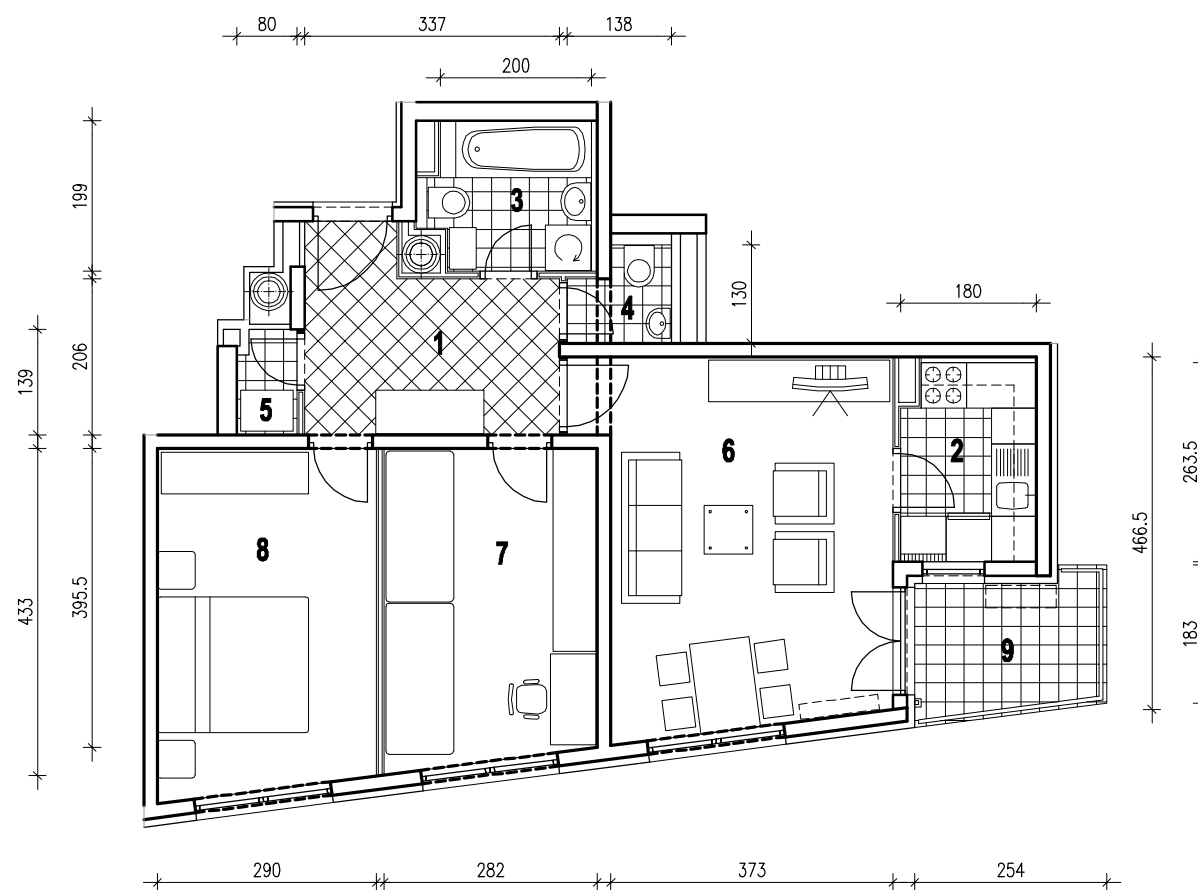
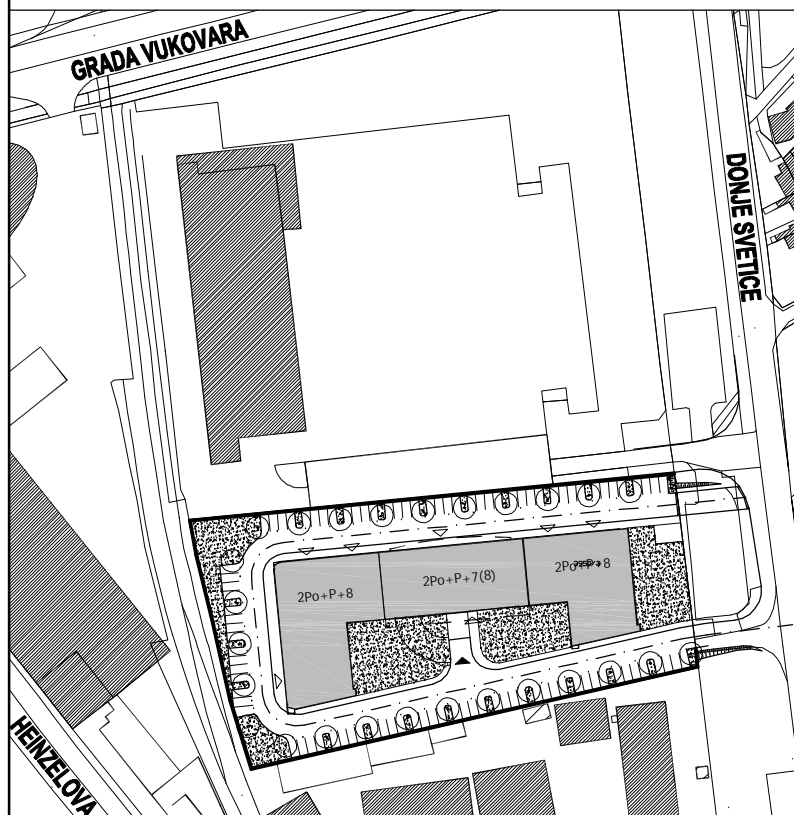


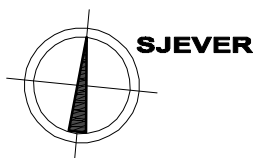
POLOŽAJ U GRADU



POLOŽAJ U ZGRADI



SITUACIJA

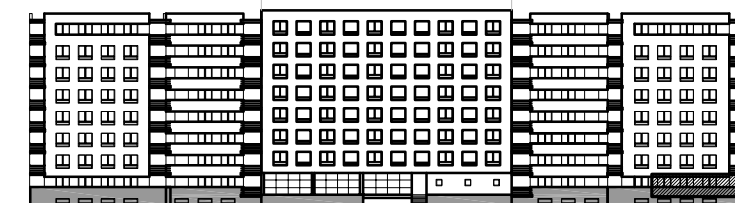


MJ 1:100

STAN F2 - TROSOBNI - 1. KAT

1. ULAZ	7.87 m ²
2. KUHINJA	4.58 m ²
3. KUPAONICA	4.05 m ²
4. WC	1.53 m ²
5. IZBA	1.06 m ²
6. DNEVNI BORAVAK	18.89 m ²
7. SOBA	11.67 m ²
8. SOBA	13.10 m ²
9. LOGIA	4.59x0.75=3.44 m ²
UKUPNO	66.19 m²

P = 66.19 m²



JUŽNO PROČELJE